

测试报告

No. CANEC2100856702

日期: 2021年01月20日 第1页,共32页

深圳深日油墨有限公司

中国深圳市南山区南山大道1035号

以下测试之样品是由申请者所提供及确认: Dic 油墨混合样

SGS工作编号: CP21-002064 - SZ

客户参考信息: 请见备注

样品接收日期: 2021年01月15日

测试周期: 2021年01月15日 - 2021年01月20日

测试要求: 根据客户要求测试

测试方法: 请参见下一页

测试结果: 请参见下一页

结论: 基于所送样品进行的测试, 镉、铅、汞、六价铬、多溴联苯(PBBs)、多溴二苯醚(PBDEs)、邻苯二甲酸酯(如邻苯二甲酸二丁酯(DBP)、邻苯二甲酸丁苯酯(BBP)、邻苯二甲酸二(2-乙基己基)酯(DEHP)和邻苯二甲酸二异丁酯(DIBP))的测试结果符合欧盟RoHS指令2011/65/EU附录II的修正指令(EU) 2015/863的限值要求。

通标标准技术服务有限公司广州分公司
授权签名



Kelly Qu 屈桃李
批准签署人

scan to see the report



CANEC2100856702

Unless otherwise agreed in writing, this document is issued by the Company subject to its General Conditions of Service printed overleaf, available on request or accessible at <http://www.sgs.com/en/Terms-and-Conditions.aspx> and, for electronic format documents, subject to Terms and Conditions for Electronic Documents at <http://www.sgs.com/en/Terms-and-Conditions/Terms-e-Documents.aspx>. Attention is drawn to the limitation of liability, indemnification and jurisdiction issues defined therein. Any holder of this document is advised that information contained hereon reflects the Company's findings at the time of its intervention only and within the limits of Client's instructions, if any. The Company's sole responsibility is to its Client and this document does not exonerate parties to a transaction from exercising all their rights and obligations under the transaction documents. This document cannot be reproduced except in full, without prior written approval of the Company. Any unauthorized alteration, forgery or falsification of the content or appearance of this document is unlawful and offenders may be prosecuted to the fullest extent of the law. Unless otherwise stated the results shown in this test report refer only to the sample(s) tested.

Attention: To check the authenticity of testing/inspection report & certificate, please contact us at telephone: (86-755) 8307 1443, or email: CN.Doccheck@sgs.com



SGS-CSTC Standards Technical Services Co., Ltd.
Guangzhou Branch

198 Kezhu Road, Sciencetech Park Guangzhou Economic & Technology Development District, Guangzhou, China 510663
中国·广州·经济技术开发区科学城科珠路198号 邮编: 510663

t (86-20) 82155555 www.sgs.com.cn
t (86-20) 82155555 sgs.china@sgs.com

测试报告

No. CANEC2100856702

日期: 2021年01月20日 第2页,共32页

测试结果:

测试样品描述:

样品编号	SGS样品ID	描述
SN1	CAN21-008567.001	黑色膏状物

备注:

- (1) 1 mg/kg = 1 ppm = 0.0001%
- (2) MDL = 方法检测限
- (3) ND = 未检出 (< MDL)
- (4) "-" = 未规定

RoHS指令2011/65/EU附录II的修正指令(EU) 2015/863

测试方法: 参考IEC 62321-4:2013+A1:2017, IEC62321-5:2013, IEC62321-7-2:2017, IEC 62321-6:2015 和 IEC62321-8:2017, 采用 ICP-OES, UV-Vis 和 GC-MS 进行分析。

测试项目	限值	单位	MDL	001
镉 (Cd)	100	mg/kg	2	ND
铅 (Pb)	1,000	mg/kg	2	ND
汞 (Hg)	1,000	mg/kg	2	ND
六价铬(Cr(VI))	1,000	mg/kg	8	ND
多溴联苯之和(PBBs)	1,000	mg/kg	-	ND
一溴联苯	-	mg/kg	5	ND
二溴联苯	-	mg/kg	5	ND
三溴联苯	-	mg/kg	5	ND
四溴联苯	-	mg/kg	5	ND
五溴联苯	-	mg/kg	5	ND
六溴联苯	-	mg/kg	5	ND
七溴联苯	-	mg/kg	5	ND
八溴联苯	-	mg/kg	5	ND
九溴联苯	-	mg/kg	5	ND
十溴联苯	-	mg/kg	5	ND
多溴二苯醚之和(PBDEs)	1,000	mg/kg	-	ND
一溴二苯醚	-	mg/kg	5	ND
二溴二苯醚	-	mg/kg	5	ND
三溴二苯醚	-	mg/kg	5	ND
四溴二苯醚	-	mg/kg	5	ND
五溴二苯醚	-	mg/kg	5	ND



Unless otherwise agreed in writing, this document is issued by the Company subject to its General Conditions of Service printed overleaf, available on request or accessible at <http://www.sgs.com/en/Terms-and-Conditions.aspx> and, for electronic format documents, subject to Terms and Conditions for Electronic Documents at <http://www.sgs.com/en/Terms-and-Conditions/Terms-e-Documents.aspx>. Attention is drawn to the limitation of liability, indemnification and jurisdiction issues defined therein. Any holder of this document is advised that information contained hereon reflects the Company's findings at the time of its intervention only and within the limits of Client's instructions, if any. The Company's sole responsibility is to its Client and this document does not exonerate parties to a transaction from exercising all their rights and obligations under the transaction documents. This document cannot be reproduced except in full, without prior written approval of the Company. Any unauthorized alteration, forgery or falsification of the content or appearance of this document is unlawful and offenders may be prosecuted to the fullest extent of the law. Unless otherwise stated the results shown in this test report refer only to the sample(s) tested.

Attention: To check the authenticity of testing / inspection report & certificate, please contact us at telephone: (86-755) 8307 1443, or email: CN.Doccheck@sgs.com

测试报告

No. CANEC2100856702

日期: 2021年01月20日 第3页,共32页

测试项目	限值	单位	MDL	001
六溴二苯醚	-	mg/kg	5	ND
七溴二苯醚	-	mg/kg	5	ND
八溴二苯醚	-	mg/kg	5	ND
九溴二苯醚	-	mg/kg	5	ND
十溴二苯醚	-	mg/kg	5	ND
邻苯二甲酸二丁酯 (DBP)	1000	mg/kg	50	ND
邻苯二甲酸丁苄酯(BBP)	1000	mg/kg	50	ND
邻苯二甲酸二(2-乙基己基)酯(DEHP)	1000	mg/kg	50	ND
邻苯二甲酸二异丁酯(DIBP)	1000	mg/kg	50	ND

备注:

- (1)最大允许极限值引用自RoHS指令(EU) 2015/863。IEC 62321系列等同于 EN 62321系列
https://www.cenelec.eu/dyn/www/f?p=104:30:1742232870351101:::FSP_ORG_ID,FSP_LANG_ID:1258637,25
 - (2) 2021年7月22号开始, DEHP, BBP, DBP 和 DIBP的限制适用于医疗器械, 包括体外医疗器械, 监控仪表, 包括工业监测和控制仪器。
 - (3) DEHP, BBP, DBP 和 DIBP的限制不适用于玩具产品, 因为No.1907/2006附录XVII第51条已对玩具产品中的DEHP, BBP, DBP 和 DIBP含量进行了限制。
- 除非另有说明, 此报告结果仅对测试的样品负责。本报告未经本公司书面许可, 不可部分复制。检测报告仅用于客户科研、教学、内部质量控制、产品研发等目的, 仅供内部参考。



Unless otherwise agreed in writing, this document is issued by the Company subject to its General Conditions of Service printed overleaf, available on request or accessible at <http://www.sgs.com/en/Terms-and-Conditions.aspx> and, for electronic format documents, subject to Terms and Conditions for Electronic Documents at <http://www.sgs.com/en/Terms-and-Conditions/Terms-e-Document.aspx>. Attention is drawn to the limitation of liability, indemnification and jurisdiction issues defined therein. Any holder of this document is advised that information contained hereon reflects the Company's findings at the time of its intervention only and within the limits of Client's instructions, if any. The Company's sole responsibility is to its Client and this document does not exonerate parties to a transaction from exercising all their rights and obligations under the transaction documents. This document cannot be reproduced except in full, without prior written approval of the Company. Any unauthorized alteration, forgery or falsification of the content or appearance of this document is unlawful and offenders may be prosecuted to the fullest extent of the law. Unless otherwise stated the results shown in this test report refer only to the sample(s) tested.

Attention: To check the authenticity of testing / inspection report & certificate, please contact us at telephone: (86-755) 8307 1443, or email: CN.Doccheck@sgs.com

测试报告

No. CANEC2100856702

日期: 2021年01月20日 第4页,共32页

REMARK: (in Chinese as 备注)
 福思 FUSION-G YELLOW 黄
 福思 FUSION-G MAGENTA 红
 福思 FUSION-G CYAN 蓝
 福思 FUSION-G BLACK 黑
 福思 FUSION-G ST YELLOW 黄
 福思 FUSION-G ST MAGENTA 红
 福思 FUSION-G ST CYAN 蓝
 福思 FUSION-G ST BLACK 黑
 福思 FUSION-G DOC SZ YELLOW 黄
 福思 FUSION-G DOC SZ MAGENTA 红
 福思 FUSION-G DOC SZ CYAN 蓝
 福思 FUSION-G DOC SZ BLACK 黑
 新时代 NEW ERA-G YELLOW 黄
 新时代 NEW ERA-G MAGENTA 红
 新时代 NEW ERA-G CYAN 蓝
 新时代 NEW ERA-G BLACK 黑
 新金冠 NEW CAPS-G AHG YELLOW 黄
 新金冠 NEW CAPS-G AHG MAGENTA 红
 新金冠 NEW CAPS-G AHG CYAN 蓝
 新金冠 NEW CAPS-G AHG BLACK 黑
 新金冠 NEW CAPS-G AHG RR YELLOW 黄
 新金冠 NEW CAPS-G AHG RR MAGENTA 红
 新金冠 NEW CAPS-G AHG RR CYAN 蓝
 新金冠 NEW CAPS-G AHG RR BLACK 黑
 新金冠 NEW CAPS-G HG BLACK 黑
 新金冠 NEW CAPS-G HG CYAN 蓝
 新金冠 NEW CAPS-G HG MAGENTA 红
 新金冠 NEW CAPS-G HG YELLOW 黄
 新金冠 NEW CAPS-G QD YELLOW 黄
 新金冠 NEW CAPS-G QD MAGENTA 红
 新金冠 NEW CAPS-G QD CYAN 蓝
 新金冠 NEW CAPS-G QD BLACK 黑
 新金冠 NEW CAPS-G DQW YELLOW 黄
 新金冠 NEW CAPS-G DQW MAGENTA 红
 新金冠 NEW CAPS-G DQW CYAN 蓝
 新金冠 NEW CAPS-G DQW BLACK 黑
 新金冠 NEW CAPS-G QD YELLOW 中黄
 新金冠 NEW CAPS-G QD YELLOW No.2黄
 新金冠 NEW CAPS-G YELLOW 黄色
 新金冠 NEW CAPS-G MAGENTA 红色
 新金冠 NEW CAPS-G CYAN 蓝色
 新金冠 NEW CAPS-G BLACK 黑色

Unless otherwise agreed in writing, this document is issued by the Company subject to its General Conditions of Service printed overleaf, available on request or accessible at <http://www.sgs.com/en/Terms-and-Conditions.aspx> and, for electronic format documents, subject to Terms and Conditions for Electronic Documents at <http://www.sgs.com/en/Terms-and-Conditions/Terms-e-Documents.aspx>. Attention is drawn to the limitation of liability, indemnification and jurisdiction issues defined therein. Any holder of this document is advised that information contained hereon reflects the Company's findings at the time of its intervention only and within the limits of Client's instructions, if any. The Company's sole responsibility is to its Client and this document does not exonerate parties to a transaction from exercising all their rights and obligations under the transaction documents. This document cannot be reproduced except in full, without prior written approval of the Company. Any unauthorized alteration, forgery or falsification of the content or appearance of this document is unlawful and offenders may be prosecuted to the fullest extent of the law. Unless otherwise stated the results shown in this test report refer only to the sample(s) tested.

Attention: To check the authenticity of testing / inspection report & certificate, please contact us at telephone: (86-755) 8307 1443, or email: CN.Doccheck@sgs.com



测试报告

No. CANEC2100856702

日期: 2021年01月20日 第5页,共32页

- 新金冠 NEW CAPS-G KT YELLOW 黄色
- 新金冠 NEW CAPS-G KT MAGENTA 红色
- 新金冠 NEW CAPS-G KT CYAN 蓝色
- 新金冠 NEW CAPS-G KT BLACK 黑色
- 新金冠 NEW CAPS-G NO.1 RR YELLOW 黄色
- 新金冠 NEW CAPS-G NO.1 RR MAGENTA 红色
- 新金冠 NEW CAPS-G NO.1 RR CYAN 蓝色
- 新金冠 NEW CAPS-G NO.1 RR BLACK 黑色
- 新金冠 NEW CAPS-G印通天下专用 黑
- 新金冠 NEW CAPS-G印通天下专用 蓝
- 新金冠 NEW CAPS-G印通天下专用 红
- 新金冠 NEW CAPS-G印通天下专用 黄
- 福龙 DRAGON-FC SOY YELLOW 黄
- 福龙 DRAGON-FC SOY 耐晒黄
- 福龙 DRAGON-FC SOY M.Y 中黄
- 福龙 DRAGON-FC SOY MAGENTA 红
- 福龙 DRAGON-FC SOY CYAN 蓝
- 福龙 DRAGON-FC SOY BLACK 黑
- 福龙 DRAGON-FC SOY RSS YELLOW 黄
- 福龙 DRAGON-FC SOY RSS耐晒黄
- 福龙 DRAGON-FC SOY RSS M.Y 中黄
- 福龙 DRAGON-FC SOY RSS MAGENTA 红
- 福龙 DRAGON-FC SOY RSS CYAN 蓝
- 福龙 DRAGON-FC SOY RSS BLACK 黑
- 福龙 DRAGON-FC SOY ND YELLOW 黄
- 福龙 DRAGON-FC SOY ND耐晒黄
- 福龙 DRAGON-FC SOY ND M.Y 中黄
- 福龙 DRAGON-FC SOY ND MAGENTA 红
- 福龙 DRAGON-FC SOY ND CYAN 蓝
- 福龙 DRAGON-FC SOY ND BLACK 黑
- 福龙 DRAGON-FC SOY耐晒黄 (NW)
- 福龙 DRAGON-FC SOY MAGENTA 红 (NW)
- 福龙 DRAGON-FC SOY CYAN 蓝 (NW)
- 福龙 DRAGON-FC SOY BLACK 黑 (NW)
- 福龙 XHY 黑
- 福龙 XHY 蓝
- 福龙 XHY 红
- 福龙 XHY 黄
- 福龙 YT 黑
- 福龙 YT 蓝
- 福龙 YT 红
- 福龙 YT 黄
- 新宝龙 DRAGON-FC YELLOW黄



Unless otherwise agreed in writing, this document is issued by the Company subject to its General Conditions of Service printed overleaf, available on request or accessible at <http://www.sgs.com/en/Terms-and-Conditions.aspx> and, for electronic format documents, subject to Terms and Conditions for Electronic Documents at <http://www.sgs.com/en/Terms-and-Conditions/Terms-e-Documents.aspx>. Attention is drawn to the limitation of liability, indemnification and jurisdiction issues defined therein. Any holder of this document is advised that information contained hereon reflects the Company's findings at the time of its intervention only and within the limits of Client's instructions, if any. The Company's sole responsibility is to its Client and this document does not exonerate parties to a transaction from exercising all their rights and obligations under the transaction documents. This document cannot be reproduced except in full, without prior written approval of the Company. Any unauthorized alteration, forgery or falsification of the content or appearance of this document is unlawful and offenders may be prosecuted to the fullest extent of the law. Unless otherwise stated the results shown in this test report refer only to the sample(s) tested.

Attention: To check the authenticity of testing / inspection report & certificate, please contact us at telephone: (86-755) 8307 1443, or email: CN.Doccheck@sgs.com

测试报告

No. CANEC2100856702

日期: 2021年01月20日 第6页,共32页

- 新宝龙DRAGON-FC MAGENTA 红
- 新宝龙DRAGON-FC CYAN 蓝
- 新宝龙DRAGON-FC BLACK 黑
- 湧水 WAKIMIZU SZ YELLOW 黄
- 湧水 WAKIMIZU SZ MAGENTA 红
- 湧水 WAKIMIZU SZ CYAN 蓝
- 湧水 WAKIMIZU SZ BLACK 黑
- DIAMOND SZ YELLOW 黄
- DIAMOND SZ HF 黄
- DIAMOND SZ MAGENTA 红
- DIAMOND SZ CYAN 蓝
- DIAMOND SZ BLACK 黑
- DIAMOND RR YELLOW 黄
- DIAMOND RR HF 黄
- DIAMOND RR MAGENTA 红
- DIAMOND RR CYAN 蓝
- DIAMOND RR BLACK 黑
- 宝麟UNICORN YELLOW 黄
- 宝麟UNICORN MAGENTA 红
- 宝麟UNICORN CYAN 蓝
- 宝麟UNICORN BLACK 黑
- 宝麟ON UNICORN ON YELLOW 黄
- 宝麟ON UNICORN ON MAGENTA 红
- 宝麟ON UNICORN ON CYAN 蓝
- 宝麟ON UNICORN ON BLACK 黑
- 宝麟ON UNICORN ON YELLOW NO.2 黄
- 宝麟ON UNICORN ON MAGENTA NO.2 红
- 宝麟ON UNICORN ON CYAN NO.2 蓝
- 宝麟ON UNICORN ON BLACK NO.2 黑
- 新宝虎 NEW TIGER YELLOW 黄
- 新宝虎 NEW TIGER YELLOW NO.2 黄
- 新宝虎 NEW TIGER YELLOW NO.3 黄
- 新宝虎 NEW TIGER MAGENTA 红
- 新宝虎 NEW TIGER CYAN 蓝
- 新宝虎 NEW TIGER BLACK 黑
- 新宝虎 QS NEW TIGER QS YELLOW 黄
- 新宝虎 QS NEW TIGER QS YELLOW NO.2 黄
- 新宝虎 QS NEW TIGER QS MAGENTA 红
- 新宝虎 QS NEW TIGER QS CYAN 蓝
- 新宝虎 QS NEW TIGER QS BLACK 黑
- 新宝虎 BS NEW TIGER BS YELLOW 黄
- 新宝虎 BS NEW TIGER BS YELLOW NO.2 黄
- 新宝虎 BS NEW TIGER BS MAGENTA 红



Unless otherwise agreed in writing, this document is issued by the Company subject to its General Conditions of Service printed overleaf, available on request or accessible at <http://www.sgs.com/en/Terms-and-Conditions.aspx> and, for electronic format documents, subject to Terms and Conditions for Electronic Documents at <http://www.sgs.com/en/Terms-and-Conditions/Terms-e-Documents.aspx>. Attention is drawn to the limitation of liability, indemnification and jurisdiction issues defined therein. Any holder of this document is advised that information contained hereon reflects the Company's findings at the time of its intervention only and within the limits of Client's instructions, if any. The Company's sole responsibility is to its Client and this document does not exonerate parties to a transaction from exercising all their rights and obligations under the transaction documents. This document cannot be reproduced except in full, without prior written approval of the Company. Any unauthorized alteration, forgery or falsification of the content or appearance of this document is unlawful and offenders may be prosecuted to the fullest extent of the law. Unless otherwise stated the results shown in this test report refer only to the sample(s) tested.

Attention: To check the authenticity of testing/inspection report & certificate, please contact us at telephone: (86-755) 8307 1443, or email: CN.Doccheck@sgs.com

测试报告

No. CANEC2100856702

日期: 2021年01月20日 第7页,共32页

- 新宝虎 BS NEW TIGER BS CYAN 蓝
- 新宝虎 BS NEW TIGER BS BLACK 黑
- 新宝虎 New Tiger黄-H
- 新宝虎 New Tiger红-H
- 新宝虎 New Tiger蓝-H
- 新宝虎 New Tiger黑-H
- 新宝虎 NEW TIGER STAR YELLOW 黄
- 新宝虎 NEW TIGER STAR MAGENTA 红
- 新宝虎 NEW TIGER STAR CYAN 蓝
- 新宝虎 NEW TIGER STAR BLACK 黑
- 新宝凤 PHOENIX YELLOW 黄
- 新宝凤 PHOENIX MAGENTA 红
- 新宝凤 PHOENIX CYAN 蓝
- 新宝凤 PHOENIX BLACK 黑
- 新宝凤 PHOENIX QS YELLOW 黄
- 新宝凤 PHOENIX QS MAGENTA 红
- 新宝凤 PHOENIX QS CYAN 蓝
- 新宝凤 PHOENIX QS BLACK 黑
- 新宝凤 PHOENIX SOY YELLOW 黄
- 新宝凤 PHOENIX SOY YELLOW 中黄
- 新宝凤 PHOENIX SOY YELLOW NO.2黄
- 新宝凤 PHOENIX SOY MAGENTA 红
- 新宝凤 PHOENIX SOY CYAN 蓝
- 新宝凤 PHOENIX SOY BLACK 黑
- 新宝凤 SOY ON PHOENIX SOY ON YELLOW 黄
- 新宝凤 SOY ON PHOENIX SOY ON YELLOW NO.2黄
- 新宝凤 SOY ON PHOENIX SOY ON YELLOW NO.3黄
- 新宝凤 SOY ON PHOENIX SOY ON MAGENTA 红
- 新宝凤 SOY ON PHOENIX SOY ON CYAN 蓝
- 新宝凤 SOY ON PHOENIX SOY ON BLACK 黑
- 新宝凤 SOY HD ON PHOENIX SOY HD ON YELLOW 黄
- 新宝凤 SOY HD ON PHOENIX SOY HD ON MAGENTA 红
- 新宝凤 SOY HD ON PHOENIX SOY HD ON CYAN 蓝
- 新宝凤 SOY HD ON PHOENIX SOY HD ON BLACK 黑
- 宝鹏 CYGNUS YELLOW 黄
- 宝鹏 CYGNUS MAGENTA 红
- 宝鹏 CYGNUS CYAN 蓝
- 宝鹏 CYGNUS BLACK 黑
- 宝鹏 ON CYGNUS ON YELLOW 黄
- 宝鹏 ON CYGNUS ON YELLOW 中黄
- 宝鹏 ON CYGNUS ON YELLOW NO.2黄
- 宝鹏 ON CYGNUS ON MAGENTA 红
- 宝鹏 ON CYGNUS ON MAGENTA NO.2红



Unless otherwise agreed in writing, this document is issued by the Company subject to its General Conditions of Service printed overleaf, available on request or accessible at <http://www.sgs.com/en/Terms-and-Conditions.aspx> and, for electronic format documents, subject to Terms and Conditions for Electronic Documents at <http://www.sgs.com/en/Terms-and-Conditions/Terms-e-Documents.aspx>. Attention is drawn to the limitation of liability, indemnification and jurisdiction issues defined therein. Any holder of this document is advised that information contained hereon reflects the Company's findings at the time of its intervention only and within the limits of Client's instructions, if any. The Company's sole responsibility is to its Client and this document does not exonerate parties to a transaction from exercising all their rights and obligations under the transaction documents. This document cannot be reproduced except in full, without prior written approval of the Company. Any unauthorized alteration, forgery or falsification of the content or appearance of this document is unlawful and offenders may be prosecuted to the fullest extent of the law. Unless otherwise stated the results shown in this test report refer only to the sample(s) tested.

Attention: To check the authenticity of testing / inspection report & certificate, please contact us at telephone: (86-755) 8307 1443, or email: CN.Doccheck@sgs.com

测试报告

No. CANEC2100856702

日期: 2021年01月20日 第8页,共32页

- 宝鹏ON CYGNUS ON CYAN 蓝
- 宝鹏ON CYGNUS ON BLACK 黑
- 宝鹏RR CYGNUS RR YELLOW 黄
- 宝鹏RR CYGNUS RR YELLOW NO.2黄
- 宝鹏RR CYGNUS RR MAGENTA 红
- 宝鹏RR CYGNUS RR MAGENTA NO.2红
- 宝鹏RR CYGNUS RR CYAN 蓝
- 宝鹏RR CYGNUS RR BLACK 黑
- Cygnus ON 宝鹏 ON Black 黑-H
- Cygnus RR 宝鹏 RR Black 黑-H
- New Pegasus 新飞马 黑
- New Pegasus 新飞马 蓝
- New Pegasus 新飞马 红
- New Pegasus 新飞马 黄
- New Pegasus 新飞马 黑 S
- New Pegasus 新飞马 蓝 S
- New Pegasus 新飞马 红 S
- New Pegasus 新飞马 黄 S
- New Pegasus 新飞马 黑-H
- New Pegasus 新飞马 蓝-H
- New Pegasus 新飞马 红-H
- New Pegasus 新飞马 黄-H
- New Pegasus 新飞马 No.2 黑
- New Pegasus 新飞马 No.2 蓝
- New Pegasus 新飞马 No.2 红
- New Pegasus 新飞马 No.2 黄
- New Pegasus 新飞马 No.2 黑-H
- New Pegasus 新飞马 No.2 蓝-H
- New Pegasus 新飞马 No.2 红-H
- New Pegasus 新飞马 No.2 黄-H
- New Pegasus 新飞马 No.2 黑 S
- New Pegasus 新飞马 No.2 蓝 S
- New Pegasus 新飞马 No.2 红 S
- New Pegasus 新飞马 No.2 黄 S
- New Pegasus 新飞马 No.3 黄
- New Pegasus 新飞马 No.3 黄-H
- New Pegasus 新飞马 No.4 黄
- New Pegasus 新飞马 No.5 黄
- New Pegasus 新飞马 No.3 红
- New Pegasus 新飞马 No.3 蓝
- New Pegasus 新飞马 红相黄(内袋)
- 宝星Stars YELLOW 黄
- 宝星Stars MAGENTA 红



Unless otherwise agreed in writing, this document is issued by the Company subject to its General Conditions of Service printed overleaf, available on request or accessible at <http://www.sgs.com/en/Terms-and-Conditions.aspx> and, for electronic format documents, subject to Terms and Conditions for Electronic Documents at <http://www.sgs.com/en/Terms-and-Conditions/Terms-e-Documents.aspx>. Attention is drawn to the limitation of liability, indemnification and jurisdiction issues defined therein. Any holder of this document is advised that information contained hereon reflects the Company's findings at the time of its intervention only and within the limits of Client's instructions, if any. The Company's sole responsibility is to its Client and this document does not exonerate parties to a transaction from exercising all their rights and obligations under the transaction documents. This document cannot be reproduced except in full, without prior written approval of the Company. Any unauthorized alteration, forgery or falsification of the content or appearance of this document is unlawful and offenders may be prosecuted to the fullest extent of the law. Unless otherwise stated the results shown in this test report refer only to the sample(s) tested.

Attention: To check the authenticity of testing / inspection report & certificate, please contact us at telephone: (86-755) 8307 1443, or email: CN.Doccheck@sgs.com
 198 Kezhu Road, Sciencetech Park Guangzhou Economic & Technology Development District, Guangzhou, China 510663 t (86-20) 82155555 www.sgs.com
 中国·广州·经济技术开发区科学城科珠路198号 邮编: 510663 t (86-20) 82155555 sgs.china@sgs.com

测试报告

No. CANEC2100856702

日期: 2021年01月20日 第9页,共32页

- 宝星Stars CYAN 蓝
- 宝星Stars BLACK 黑
- 宝星Stars-H YELLOW 黄-H
- 宝星Stars-H MAGENTA 红-H
- 宝星Stars-H CYAN 蓝-H
- 宝星Stars-H BLACK 黑-H
- 宝星Stars ON YELLOW 黄
- 宝星Stars ON MAGENTA 红
- 宝星Stars ON CYAN 蓝
- 宝星Stars ON BLACK 黑
- 宝星Stars RR YELLOW 黄
- 宝星Stars RR MAGENTA 红
- 宝星Stars RR CYAN 蓝
- 宝星Stars RR BLACK 黑
- 宝莹 黄
- 宝莹 红
- 宝莹 蓝
- 宝莹 黑
- NCP NW PROCESS BLACK 黑
- NCP NW PROCESS CYAN 蓝
- NCP NW PROCESS MAGENTA 红
- NCP NW FG 28 BRONZE RED 金红
- NCP NW PROCESS YELLOW 黄
- 美鲸 黑
- 美鲸 蓝
- 美鲸 红
- 美鲸 黄
- POP 黄
- POP 红
- POP 蓝
- POP 黑
- POP BRONZE RED 金光红
- POP 大红
- POP 桃红
- POP W白
- POP 超耐晒红
- POP 超耐晒黄
- POP 光油
- POP 哑油
- POP RR黄
- POP RR红
- POP RR蓝
- POP RR黑

Unless otherwise agreed in writing, this document is issued by the Company subject to its General Conditions of Service printed overleaf, available on request or accessible at <http://www.sgs.com/en/Terms-and-Conditions.aspx> and, for electronic format documents, subject to Terms and Conditions for Electronic Documents at <http://www.sgs.com/en/Terms-and-Conditions/Terms-e-Documents.aspx>. Attention is drawn to the limitation of liability, indemnification and jurisdiction issues defined therein. Any holder of this document is advised that information contained hereon reflects the Company's findings at the time of its intervention only and within the limits of Client's instructions, if any. The Company's sole responsibility is to its Client and this document does not exonerate parties to a transaction from exercising all their rights and obligations under the transaction documents. This document cannot be reproduced except in full, without prior written approval of the Company. Any unauthorized alteration, forgery or falsification of the content or appearance of this document is unlawful and offenders may be prosecuted to the fullest extent of the law. Unless otherwise stated the results shown in this test report refer only to the sample(s) tested.

Attention: To check the authenticity of testing/inspection report & certificate, please contact us at telephone: (86-755) 8307 1443, or email: CN.Doccheck@sgs.com



SGS-CSTC Standards Technical Services Co., Ltd.
Guangzhou Branch

198 Kezhu Road, Sciencetech Park Guangzhou Economic & Technology Development District, Guangzhou, China 510663
中国·广州·经济技术开发区科学城科珠路198号 邮编: 510663

t (86-20) 82155555 www.sgs.com.cn
t (86-20) 82155555 sgs.china@sgs.com

测试报告

No. CANEC2100856702

日期: 2021年01月20日 第10页,共32页

- POP E_型 黄
- POP E_型 红
- POP E_型 蓝
- POP E_型 黑
- POP E-型 NO.2 白
- POP E-型 No.3 黑
- POP E-型 No.2 黑
- POP E-型 No.2 蓝
- POP NO.2 红
- POP L-型 黄
- POP L-型 红
- POP L-型 蓝
- POP L-型 黑
- POP L-型 白
- FG 14 MAGENTA 红
- FG 23 MEDIUM RED 中红
- FG 27 金赤
- FG 31 ORANGE 橙
- FG 28 BRONZE RED 金红
- FG 42 赤黄
- FG 48 MEDIUM Y 中黄
- FG 51 GREEN 草绿
- FG 60 BRONZE BLUE 紺蓝
- FG 62 BRONZE BLUE 紺蓝
- FG 65 ULTRAMARINE BLUE 群青
- FG 68 紫
- FG 72 牡丹红
- FG 75 玫瑰红
- FG 179 WHITE 白
- EG 天蓝
- EG 射光蓝
- EG 孔雀蓝
- EG 绿
- EG 大红
- EG 品红
- EG 橙
- EG 金红
- 大鹏 金红
- EG 紫
- EG 白
- EG 中黄
- EG调墨油
- EG透明黄

Unless otherwise agreed in writing, this document is issued by the Company subject to its General Conditions of Service printed overleaf, available on request or accessible at <http://www.sgs.com/en/Terms-and-Conditions.aspx> and, for electronic format documents, subject to Terms and Conditions for Electronic Documents at <http://www.sgs.com/en/Terms-and-Conditions/Terms-e-Documents.aspx>. Attention is drawn to the limitation of liability, indemnification and jurisdiction issues defined therein. Any holder of this document is advised that information contained hereon reflects the Company's findings at the time of its intervention only and within the limits of Client's instructions, if any. The Company's sole responsibility is to its Client and this document does not exonerate parties to a transaction from exercising all their rights and obligations under the transaction documents. This document cannot be reproduced except in full, without prior written approval of the Company. Any unauthorized alteration, forgery or falsification of the content or appearance of this document is unlawful and offenders may be prosecuted to the fullest extent of the law. Unless otherwise stated the results shown in this test report refer only to the sample(s) tested.

Attention: To check the authenticity of testing /inspection report & certificate, please contact us at telephone: (86-755) 8307 1443, or email: CN.Doccheck@sgs.com



SGS-CSTC Standards Technical Services Co., Ltd.
Guangzhou Branch / 广州分公司 / 广州检测实验室

198 Kezhu Road, Sciencetech Park Guangzhou Economic & Technology Development District, Guangzhou, China 510663
中国·广州·经济技术开发区科学城科珠路198号 邮编: 510663

t (86-20) 82155555 www.sgs.com.cn
t (86-20) 82155555 sgs.china@sgs.com

测试报告

No. CANEC2100856702

日期: 2021年01月20日 第11页,共32页

- BG 紫
- BG 紫红
- BG 桃红
- BG 耐晒金红
- BG 耐晒黄
- BG 橙
- BG 中黄
- BG 天蓝
- BG 洋红
- BG 深黄
- BG 大红
- BG 深蓝
- BG 射光蓝
- BG 黑
- BG 蓝
- BG 绿
- BG 红
- BG MEDIUM 调墨油
- BG 金红
- BG WHITE 白
- BG 黄
- HU 紫
- HU 紫红
- HU 桃红
- HU 耐晒金红
- HU 耐晒黄
- HU 橙
- HU 中黄
- HU 天蓝
- HU 洋红
- HU 深黄
- HU 大红
- HU 深蓝
- HU 射光蓝
- HU 黑
- HU 蓝
- HU 绿
- HU 红
- HU MEDIUM 调墨油
- HU 金红
- HU WHITE 白
- HU 黄
- HG BLACK 黑



Unless otherwise agreed in writing, this document is issued by the Company subject to its General Conditions of Service printed overleaf, available on request or accessible at <http://www.sgs.com/en/Terms-and-Conditions.aspx> and, for electronic format documents, subject to Terms and Conditions for Electronic Documents at <http://www.sgs.com/en/Terms-and-Conditions/Terms-e-Documents.aspx>. Attention is drawn to the limitation of liability, indemnification and jurisdiction issues defined therein. Any holder of this document is advised that information contained hereon reflects the Company's findings at the time of its intervention only and within the limits of Client's instructions, if any. The Company's sole responsibility is to its Client and this document does not exonerate parties to a transaction from exercising all their rights and obligations under the transaction documents. This document cannot be reproduced except in full, without prior written approval of the Company. Any unauthorized alteration, forgery or falsification of the content or appearance of this document is unlawful and offenders may be prosecuted to the fullest extent of the law. Unless otherwise stated the results shown in this test report refer only to the sample(s) tested.

Attention: To check the authenticity of testing / inspection report & certificate, please contact us at telephone: (86-755) 8307 1443, or email: CN.Doccheck@sgs.com

测试报告

No. CANEC2100856702

日期: 2021年01月20日 第12页,共32页

- HG CYAN 蓝
- HG MAGENTA 红
- HG YELLOW 黄
- SOY Reflex Blue 射光蓝
- SOY Ultramarine Blue(FG65)群青
- SOY SILVER 银
- SOY RICH GOLD 青金
- SOY Green 绿
- SOY Green(FG51)草绿
- SOY Rose (FG75) 玫瑰红
- SOY L.F Magenta 耐晒红
- SOY S.L.F Magenta 超耐晒红
- SOY L.F Red 耐晒大红
- SOY Orange (FG31) 橙
- SOY 131 Orange 橙
- SOY L.F Orange 耐晒橙
- SOY Warm Red(FG28)金红
- SOY 2834 Scarlet 金红
- SOY L.F Warm Red 耐晒金红
- SOY S.L.F Warm Red 超耐晒金红
- SOY 165 Violet 紫
- SOY 167 Violet 紫
- SOY PURPLE 紫红
- SOY Special White 特白
- SOY Special White RSS 特白
- SOY 2539 YELLOW 黄
- SOY L.F Yellow 耐晒黄
- SOY S.L.F Yellow 超耐晒黄
- 115 红 SOY BASE
- 117 桃红 SOY BASE
- 耐晒红
- 超耐晒红
- 耐晒大红
- 耐晒橙
- 耐晒金红
- 超耐晒金红
- 耐晒黄
- 超耐晒黄
- GD OP VARNISH 光油
- GD *2 OP VARNISH 光油
- GD *3光油
- GD *4光油
- GD *5-2光油

Unless otherwise agreed in writing, this document is issued by the Company subject to its General Conditions of Service printed overleaf, available on request or accessible at <http://www.sgs.com/en/Terms-and-Conditions.aspx> and, for electronic format documents, subject to Terms and Conditions for Electronic Documents at <http://www.sgs.com/en/Terms-and-Conditions/Terms-e-Documents.aspx>. Attention is drawn to the limitation of liability, indemnification and jurisdiction issues defined therein. Any holder of this document is advised that information contained hereon reflects the Company's findings at the time of its intervention only and within the limits of Client's instructions, if any. The Company's sole responsibility is to its Client and this document does not exonerate parties to a transaction from exercising all their rights and obligations under the transaction documents. This document cannot be reproduced except in full, without prior written approval of the Company. Any unauthorized alteration, forgery or falsification of the content or appearance of this document is unlawful and offenders may be prosecuted to the fullest extent of the law. Unless otherwise stated the results shown in this test report refer only to the sample(s) tested.

Attention: To check the authenticity of testing / inspection report & certificate, please contact us at telephone: (86-755) 8307 1443, or email: CN.Doccheck@sgs.com



SGS-CSTC Standards Technical Services Co., Ltd.
Guangzhou Branch / 广州分公司 / 广州化学实验室

198 Kezhu Road, Sciencetech Park Guangzhou Economic & Technology Development District, Guangzhou, China 510663
中国·广州·经济技术开发区科学城科珠路198号 邮编: 510663

t (86-20) 82155555 www.sgs.com.cn
t (86-20) 82155555 sgs.china@sgs.com

测试报告

No. CANEC2100856702

日期: 2021年01月20日 第13页,共32页

- GD.OP VARNISH 6# 光油
- GD *7 OP光油
- GD *8光油
- GD*9光油
- GD #10 HG 光油
- GW OP VARNISH 光油
- GW 联机无蜡光油
- 消光剂
- R-R MATT OP *2 耐磨消光
- NCP FG MATT VARNISH 消光剂
- MATT OP #3耐磨消光油
- MATT OP #4消光油
- MATT OP #5消光油
- MATT OP #6 消光油
- PINK MAGENTA 桃红
- BIG MAGENTA 大红
- NCP SPECIAL BLACK 特黑
- NCP C. GREEN 绿
- NCP D.RICH GOLD 青金
- NCP D.PALE GOLD 赤金
- NCP D. SILVER 1100
- NCP D. SILVER 银
- NCP D.WHITE 白
- NCP D.S WHITE 白
- NCP D.SPECIAL WHITE 特白
- NCP D. PUPPLE 紫红
- NCP D. FG MEDIUM 调墨油
- 100E RICH GOLD 青金
- 100E PALE GOLD赤金
- 100E SILVER 银
- A33 REFLEX BLUE C 射光蓝
- A38 射光蓝
- CH 112K 红
- CH 113K 赤
- CH 115K 红
- CH 117K 桃红
- CH 120R 红
- CH 131O 橙
- CH 134O 耐性橙
- CH 140Y 黄
- CH 148Y 黄
- CH 152G 绿
- CH 165V 紫

Unless otherwise agreed in writing, this document is issued by the Company subject to its General Conditions of Service printed overleaf, available on request or accessible at <http://www.sgs.com/en/Terms-and-Conditions.aspx> and, for electronic format documents, subject to Terms and Conditions for Electronic Documents at <http://www.sgs.com/en/Terms-and-Conditions/Terms-e-Documents.aspx>. Attention is drawn to the limitation of liability, indemnification and jurisdiction issues defined therein. Any holder of this document is advised that information contained hereon reflects the Company's findings at the time of its intervention only and within the limits of Client's instructions, if any. The Company's sole responsibility is to its Client and this document does not exonerate parties to a transaction from exercising all their rights and obligations under the transaction documents. This document cannot be reproduced except in full, without prior written approval of the Company. Any unauthorized alteration, forgery or falsification of the content or appearance of this document is unlawful and offenders may be prosecuted to the fullest extent of the law. Unless otherwise stated the results shown in this test report refer only to the sample(s) tested.

Attention: To check the authenticity of testing/inspection report & certificate, please contact us at telephone: (86-755) 8307 1443, or email: CN.Doccheck@sgs.com



SGS-CSTC Standards Technical Services Co., Ltd.
Guangzhou Branch

198 Kezhu Road, Sciencetech Park Guangzhou Economic & Technology Development District, Guangzhou, China 510663
中国·广州·经济技术开发区科学城科珠路198号 邮编: 510663

t (86-20) 82155555 www.sgs.com.cn
t (86-20) 82155555 sgs.china@sgs.com

测试报告

No. CANEC2100856702

日期: 2021年01月20日 第14页,共32页

- CH 167V 紫
- CH 185B 黑
- DIAMOND SZ 141Y BASE 黄
- DIAMOND SZ 142Y BASE 黄
- DIAMOND SZ 143Y BASE 黄
- DIAMOND SZ 147Y BASE 黄
- DIAMOND SZ 114K BASE 红
- DIAMOND SZ 125R BASE 金红
- DIAMOND SZ 129R BASE 金红
- DIAMOND SZ 131O BASE 橙
- DIAMOND SZ 134O BASE 橙
- DIAMOND SZ 157C BASE 蓝
- DIAMOND SZ 158C BASE 蓝
- DIAMOND SZ 185B BASE 黑
- DIAMOND SZ 168V BASE 紫
- DIAMOND SZ 112K BASE 红
- DIAMOND SZ 126R BASE 红
- K05 PROCESS M 红
- Y32耐晒黄
- Y72 PC PROCESS 黄
- R74 红
- R251耐晒金红
- 134 耐性橙
- SUN 05-24 中黄
- SUN 05-14 洋红
- SUN 05-32 天兰
- SUN 05-52 黑
- SUN 05-03 金红
- SUN 05-06 大红
- SUN 05-40 白
- SUN 05-60 绿
- SUN 05-29 桔黄
- SUN 05-27 深黄
- SUN 05-37 深蓝
- SUN 05-90 亮光浆
- SUN 05-92 去粘剂
- SUN 05-93 冲淡剂
- SUN 05-94 耐磨光油
- SUN 05-71 青莲
- SUN 05-15 桃红
- SUN 05-24A 中黄
- SUN 05-39 射光蓝
- SUN 05-30 孔雀蓝



Unless otherwise agreed in writing, this document is issued by the Company subject to its General Conditions of Service printed overleaf, available on request or accessible at <http://www.sgs.com/en/Terms-and-Conditions.aspx> and, for electronic format documents, subject to Terms and Conditions for Electronic Documents at <http://www.sgs.com/en/Terms-and-Conditions/Terms-e-Documents.aspx>. Attention is drawn to the limitation of liability, indemnification and jurisdiction issues defined therein. Any holder of this document is advised that information contained hereon reflects the Company's findings at the time of its intervention only and within the limits of Client's instructions, if any. The Company's sole responsibility is to its Client and this document does not exonerate parties to a transaction from exercising all their rights and obligations under the transaction documents. This document cannot be reproduced except in full, without prior written approval of the Company. Any unauthorized alteration, forgery or falsification of the content or appearance of this document is unlawful and offenders may be prosecuted to the fullest extent of the law. Unless otherwise stated the results shown in this test report refer only to the sample(s) tested.

Attention: To check the authenticity of testing/inspection report & certificate, please contact us at telephone: (86-755) 8307 1443, or email: CN.Doccheck@sgs.com

测试报告

No. CANEC2100856702

日期: 2021年01月20日 第15页,共32页

SUN 05-18 玫瑰红
SUN 90-83 银墨
SUN 94-90 青金墨
PHOENIX 05 宝凤 05-52黑
PHOENIX 05 宝凤 05-32 天蓝
PHOENIX 05 宝凤 05-37 深蓝
PHOENIX 90 宝凤 90-83 银墨
PHOENIX 94 宝凤 94-90 青金墨
PHOENIX 05 宝凤 05-60 绿
PHOENIX 05 宝凤 05-14 洋红
PHOENIX 05 宝凤 05-06 大红
PHOENIX 05 宝凤 05-90 亮光浆
PHOENIX 05 宝凤 05-94 耐磨光油
PHOENIX 05 宝凤 05-93 冲淡剂
PHOENIX 05 宝凤 05-92 去粘剂
PHOENIX 05 宝凤 05-29 桔黄
PHOENIX 05 宝凤 05-03 金红
PHOENIX 05 宝凤 05-40 白
PHOENIX 05 宝凤 05-24 中黄
PHOENIX 05 宝凤 05-24A 中黄
PHOENIX 05 宝凤 05-24B 中黄
PHOENIX 05 宝凤 05-27 深黄
PHOENIX 05 宝凤05-71 青莲
PHOENIX 05 宝凤05-15 桃红
PHOENIX 05 宝凤05-39 射光蓝
PHOENIX 05 宝凤05-30 孔雀蓝
PHOENIX 05 宝凤05-18 玫瑰红
DSK SZ 580 BLUE 荧光蓝
DSK SZ 510 GREEN 荧光绿
DSK SZ 710 MAGENTA 荧光品红
DSK SZ 400 ORANGE 荧光橙
DSK SZ 720 PINK 荧光粉红
DSK SZ 760 PINK 荧光粉红
DSK SZ 300 RED 荧光红
DSK SZ 280 RED 荧光红
DSK SZ 480 YELLOW 荧光黄
DSK SZ 450 YELLOW 荧光深黄
Cygnus NV 宝鹏 NV Black 黑
Cygnus NV 宝鹏 NV Cyan 蓝
Cygnus NV 宝鹏 NV Magenta 红
Cygnus NV 宝鹏 NV Yellow 黄
Cygnus JH ON 黑
Cygnus JH ON 蓝



Unless otherwise agreed in writing, this document is issued by the Company subject to its General Conditions of Service printed overleaf, available on request or accessible at <http://www.sgs.com/en/Terms-and-Conditions.aspx> and, for electronic format documents, subject to Terms and Conditions for Electronic Documents at <http://www.sgs.com/en/Terms-and-Conditions/Terms-e-Documents.aspx>. Attention is drawn to the limitation of liability, indemnification and jurisdiction issues defined therein. Any holder of this document is advised that information contained hereon reflects the Company's findings at the time of its intervention only and within the limits of Client's instructions, if any. The Company's sole responsibility is to its Client and this document does not exonerate parties to a transaction from exercising all their rights and obligations under the transaction documents. This document cannot be reproduced except in full, without prior written approval of the Company. Any unauthorized alteration, forgery or falsification of the content or appearance of this document is unlawful and offenders may be prosecuted to the fullest extent of the law. Unless otherwise stated the results shown in this test report refer only to the sample(s) tested.

Attention: To check the authenticity of testing/inspection report & certificate, please contact us at telephone: (86-755) 8307 1443, or email: CN.Doccheck@sgs.com

测试报告

No. CANEC2100856702

日期: 2021年01月20日 第16页,共32页

- Cygnus JH ON 红
- Cygnus JH ON 黄
- DRAGON-FC SOY NV 福龙 NV BLACK 黑
- DRAGON-FC SOY NV 福龙 NV CYAN 蓝
- DRAGON-FC SOY NV 福龙 NV MAGENTA 红
- DRAGON-FC SOY NV 福龙 NV YELLOW 黄
- MATT BLACK 哑光黑
- MATT CYAN 哑光蓝
- MATT MAGENTA 哑光红
- MATT YELLOW 哑光黄
- 蓝龙 Black 黑
- 蓝龙 Cyan 蓝
- 蓝龙 Magenta 红
- 蓝龙 Yellow 黄
- 蓝鹏 Black 黑
- 蓝鹏 Cyan 蓝
- 蓝鹏 Magenta 红
- 蓝鹏 Yellow 黄
- 蓝凤 Black 黑
- 蓝凤 Cyan 蓝
- 蓝凤 Magenta 红
- 蓝凤 Yellow 黄
- 蓝马 Black 黑
- 蓝马 Cyan 蓝
- 蓝马 Magenta 红
- 蓝马 Yellow 黄
- 蓝钻 黑
- 蓝钻 蓝
- 蓝钻 红
- 蓝钻 黄
- 大道网专供1号 黄
- 大道网专供1号 红
- 大道网专供1号 蓝
- 大道网专供1号 黑
- 大道网专供2号 黄
- 大道网专供2号 红
- 大道网专供2号 蓝
- 大道网专供2号 黑
- 飓风经济型胶印油墨 中黄
- 飓风经济型胶印油墨 黄色
- 飓风经济型胶印油墨 红色
- 飓风经济型胶印油墨 蓝色
- 飓风经济型胶印油墨 黑色



Unless otherwise agreed in writing, this document is issued by the Company subject to its General Conditions of Service printed overleaf, available on request or accessible at <http://www.sgs.com/en/Terms-and-Conditions.aspx> and, for electronic format documents, subject to Terms and Conditions for Electronic Documents at <http://www.sgs.com/en/Terms-and-Conditions/Terms-e-Documents.aspx>. Attention is drawn to the limitation of liability, indemnification and jurisdiction issues defined therein. Any holder of this document is advised that information contained hereon reflects the Company's findings at the time of its intervention only and within the limits of Client's instructions, if any. The Company's sole responsibility is to its Client and this document does not exonerate parties to a transaction from exercising all their rights and obligations under the transaction documents. This document cannot be reproduced except in full, without prior written approval of the Company. Any unauthorized alteration, forgery or falsification of the content or appearance of this document is unlawful and offenders may be prosecuted to the fullest extent of the law. Unless otherwise stated the results shown in this test report refer only to the sample(s) tested.

Attention: To check the authenticity of testing/inspection report & certificate, please contact us at telephone: (86-755) 8307 1443, or email: CN.Doccheck@sgs.com

测试报告

No. CANEC2100856702

日期: 2021年01月20日 第17页,共32页

- 飓风经济型胶印油墨 中黄-H
- 飓风经济型胶印油墨 黄色-H
- 飓风经济型胶印油墨 红色-H
- 飓风经济型胶印油墨 蓝色-H
- 飓风经济型胶印油墨 黑色-H
- 飓风亮光快干胶印油墨 中黄
- 飓风亮光快干胶印油墨 黄色
- 飓风亮光快干胶印油墨 红色
- 飓风亮光快干胶印油墨 蓝色
- 飓风亮光快干胶印油墨 黑色
- 飓风快干高光不结皮胶印油墨 中黄
- 飓风快干高光不结皮胶印油墨 黄色
- 飓风快干高光不结皮胶印油墨 红色
- 飓风快干高光不结皮胶印油墨 蓝色
- 飓风快干高光不结皮胶印油墨 黑色
- Druckmeister RUBY 中黄
- Druckmeister RUBY 黄色
- Druckmeister RUBY 红色
- Druckmeister RUBY 蓝色
- Druckmeister RUBY 黑色
- Druckmeister SAPPHIRE 中黄
- Druckmeister SAPPHIRE 黄色
- Druckmeister SAPPHIRE 红色
- Druckmeister SAPPHIRE 蓝色
- Druckmeister SAPPHIRE 黑色
- Druckmeister CRYSTAL 中黄
- Druckmeister CRYSTAL 黄色
- Druckmeister CRYSTAL 红色
- Druckmeister CRYSTAL 蓝色
- Druckmeister CRYSTAL 黑色
- 文轩墨1-1 黑
- 文轩墨1-1 蓝
- 文轩墨1-1 红
- 文轩墨1-1 黄
- 文轩墨1-2 黑
- 文轩墨1-2 蓝
- 文轩墨1-2 红
- 文轩墨1-2 黄
- 文轩墨1-3 黑
- 文轩墨1-3 蓝
- 文轩墨1-3 红
- 文轩墨1-3 黄
- 文轩墨1-4 黑

Unless otherwise agreed in writing, this document is issued by the Company subject to its General Conditions of Service printed overleaf, available on request or accessible at <http://www.sgs.com/en/Terms-and-Conditions.aspx> and, for electronic format documents, subject to Terms and Conditions for Electronic Documents at <http://www.sgs.com/en/Terms-and-Conditions/Terms-e-Documents.aspx>. Attention is drawn to the limitation of liability, indemnification and jurisdiction issues defined therein. Any holder of this document is advised that information contained hereon reflects the Company's findings at the time of its intervention only and within the limits of Client's instructions, if any. The Company's sole responsibility is to its Client and this document does not exonerate parties to a transaction from exercising all their rights and obligations under the transaction documents. This document cannot be reproduced except in full, without prior written approval of the Company. Any unauthorized alteration, forgery or falsification of the content or appearance of this document is unlawful and offenders may be prosecuted to the fullest extent of the law. Unless otherwise stated the results shown in this test report refer only to the sample(s) tested.

Attention: To check the authenticity of testing / inspection report & certificate, please contact us at telephone: (86-755) 8307 1443, or email: CN.Doccheck@sgs.com



SGS-CSTC Standards Technical Services Co., Ltd.
Guangzhou Branch / 广州分公司 / 广州化学实验室

198 Kezhu Road, Sciencetech Park Guangzhou Economic & Technology Development District, Guangzhou, China 510663
中国·广州·经济技术开发区科学城科珠路198号 邮编: 510663

t (86-20) 82155555 www.sgs.com.cn
t (86-20) 82155555 sgs.china@sgs.com

测试报告

No. CANEC2100856702

日期: 2021年01月20日 第18页,共32页

- 文轩墨1-4 蓝
- 文轩墨1-4 红
- 文轩墨1-4 黄
- 新金冠 JN BLACK 黑
- 新金冠 JN CYAN 蓝
- 新金冠 JN MAGENTA 红
- 新金冠 JN YELLOW 黄
- 新冠军MPS-RR 黄
- 新冠军MPS-RR 红
- 新冠军MPS-RR 蓝
- 新冠军MPS-RR 黑
- MPS-RR 黑-H
- MPS-RR 蓝-H
- MPS-RR 红-H
- CUT-HY 中黄
- CUT-HY 黄
- CUT-HY 红
- CUT-HY 蓝
- CUT-HY 黑
- 宝印 QD 黄
- 宝印 QD 红
- 宝印 QD 蓝
- 宝印 QD黑
- 金鼎 黄
- 金鼎 红
- 金鼎 蓝
- 金鼎 黑
- 宝鼎 黄
- 宝鼎 红
- 宝鼎 蓝
- 宝鼎 黑
- 宝辉 黄
- 宝辉 红
- 宝辉 蓝
- 宝辉 黑
- 宝辉 NO.2 黄
- 宝丰 黄
- 宝丰 红
- 宝丰 蓝
- 宝丰 黑
- 宝宇 黑
- 宝宇 蓝
- 宝宇 红



Unless otherwise agreed in writing, this document is issued by the Company subject to its General Conditions of Service printed overleaf, available on request or accessible at <http://www.sgs.com/en/Terms-and-Conditions.aspx> and, for electronic format documents, subject to Terms and Conditions for Electronic Documents at <http://www.sgs.com/en/Terms-and-Conditions/Terms-e-Documents.aspx>. Attention is drawn to the limitation of liability, indemnification and jurisdiction issues defined therein. Any holder of this document is advised that information contained hereon reflects the Company's findings at the time of its intervention only and within the limits of Client's instructions, if any. The Company's sole responsibility is to its Client and this document does not exonerate parties to a transaction from exercising all their rights and obligations under the transaction documents. This document cannot be reproduced except in full, without prior written approval of the Company. Any unauthorized alteration, forgery or falsification of the content or appearance of this document is unlawful and offenders may be prosecuted to the fullest extent of the law. Unless otherwise stated the results shown in this test report refer only to the sample(s) tested.

Attention: To check the authenticity of testing/inspection report & certificate, please contact us at telephone: (86-755) 8307 1443, or email: CN.Doccheck@sgs.com

测试报告

No. CANEC2100856702

日期: 2021年01月20日 第19页,共32页

- 宝宇 黄
- 彩冠 黑
- 彩冠 蓝
- 彩冠 红
- 彩冠 黄
- 爱丽丝 GP-1 中黄
- 爱丽丝 GP-1 黄
- 爱丽丝 GP-1 红
- 爱丽丝 GP-1 蓝
- 爱丽丝 GP-1 黑
- 爱丽丝RUB 黑
- 爱丽丝RUB 蓝
- 爱丽丝RUB 红
- 爱丽丝RUB 黄
- 丽彩高光不结皮 黑
- 丽彩高光不结皮 蓝
- 丽彩高光不结皮 红
- 丽彩高光不结皮 黄
- 丽彩高光不结皮 NO.2 黄
- 新丽 黑(不结皮)
- 新丽 蓝(不结皮)
- 新丽 红(不结皮)
- 新丽 黄(不结皮)
- 宝鲸 黑
- 宝鲸 蓝
- 宝鲸 红
- 宝鲸 黄
- XHY 黄
- XHY 红
- XHY 蓝
- XHY 黑
- 豪颜 黄
- 豪颜 红
- 豪颜 蓝
- 豪颜 黑
- 宝鹏 NV HF黄
- 福思 耐磨增强 黄(KD)
- 福思 耐磨增强 红(KD)
- 福思 耐磨增强 蓝(KD)
- 福思 耐磨增强 黑(KD)
- 新金冠 爱丽丝 RR 黄(KD)
- 新金冠 爱丽丝 RR 红(KD)
- 新金冠 爱丽丝 RR 蓝(KD)



Unless otherwise agreed in writing, this document is issued by the Company subject to its General Conditions of Service printed overleaf, available on request or accessible at <http://www.sgs.com/en/Terms-and-Conditions.aspx> and, for electronic format documents, subject to Terms and Conditions for Electronic Documents at <http://www.sgs.com/en/Terms-and-Conditions/Terms-e-Document.aspx>. Attention is drawn to the limitation of liability, indemnification and jurisdiction issues defined therein. Any holder of this document is advised that information contained hereon reflects the Company's findings at the time of its intervention only and within the limits of Client's instructions, if any. The Company's sole responsibility is to its Client and this document does not exonerate parties to a transaction from exercising all their rights and obligations under the transaction documents. This document cannot be reproduced except in full, without prior written approval of the Company. Any unauthorized alteration, forgery or falsification of the content or appearance of this document is unlawful and offenders may be prosecuted to the fullest extent of the law. Unless otherwise stated the results shown in this test report refer only to the sample(s) tested.

Attention: To check the authenticity of testing/inspection report & certificate, please contact us at telephone: (86-755) 8307 1443, or email: CN.Doccheck@sgs.com

测试报告

No. CANEC2100856702

日期: 2021年01月20日 第20页,共32页

新皇冠 爱丽丝 RR 黑(KD)
 宝凤 QD NO.3 黄
 福思 黄(JP)
 福思 红(JP)
 福思 蓝(JP)
 福思 黑(JP)
 晶通不结皮油墨 黑色
 晶通不结皮油墨 蓝色
 晶通不结皮油墨 红色
 晶通不结皮油墨 黄色
 WEB COLD B 黑 (冷固)
 WEB COLD C 蓝 (冷固)
 WEB COLD M 红 (冷固)
 WEB COLD M 红 (冷固) S
 WEB COLD Y 黄 (冷固)
 宝鼎 NO.3 黑
 宝鼎 NO.3 蓝
 宝鼎 NO.3 黄
 宝鼎 NO.3 红
 宝印-99 黑
 宝印-99 蓝
 宝印-99 红
 宝印-99 黄
 金福 黑
 金福 蓝
 金福 黄
 金福 红
 福印 中黄
 福印 黄
 福印 红
 福印 蓝
 福印 黑
 ZRP 超耐晒黄
 ZRP 超耐晒红相黄
 ZRP 超耐晒橙
 ZRP 超耐晒金红
 ZRP 超耐晒桃红
 ZRP 超耐晒红
 ZRP 超耐晒绿
 ZRP 超耐晒紫
 ZRP 超耐晒黑
 蓝鹏 NO.2 红
 宝鲸 NO.2 透明黄

Unless otherwise agreed in writing, this document is issued by the Company subject to its General Conditions of Service printed overleaf, available on request or accessible at <http://www.sgs.com/en/Terms-and-Conditions.aspx> and, for electronic format documents, subject to Terms and Conditions for Electronic Documents at <http://www.sgs.com/en/Terms-and-Conditions/Terms-e-Documents.aspx>. Attention is drawn to the limitation of liability, indemnification and jurisdiction issues defined therein. Any holder of this document is advised that information contained hereon reflects the Company's findings at the time of its intervention only and within the limits of Client's instructions, if any. The Company's sole responsibility is to its Client and this document does not exonerate parties to a transaction from exercising all their rights and obligations under the transaction documents. This document cannot be reproduced except in full, without prior written approval of the Company. Any unauthorized alteration, forgery or falsification of the content or appearance of this document is unlawful and offenders may be prosecuted to the fullest extent of the law. Unless otherwise stated the results shown in this test report refer only to the sample(s) tested.

Attention: To check the authenticity of testing/inspection report & certificate, please contact us at telephone: (86-755) 8307 1443, or email: CN.Doccheck@sgs.com



SGS-CSTC Standards Technical Services Co., Ltd.
 Guangzhou Branch / 广州分公司 / 广州经济技术开发区科学城科珠路198号

198 Kezhu Road, Sciencetech Park Guangzhou Economic & Technology Development District, Guangzhou, China 510663
 中国·广州·经济技术开发区科学城科珠路198号 邮编: 510663

t (86-20) 82155555 www.sgs.com.cn
 t (86-20) 82155555 sgs.china@sgs.com

测试报告

No. CANEC2100856702

日期: 2021年01月20日 第21页,共32页

- MPS-RR NO.2 透明黄
- New Tiger 新宝虎 黑 BS-H
- 晶通-G 黄
- 晶通-G 红
- 晶通-G 蓝
- 晶通-G 黑
- 宝钧 (不结皮) 黄
- 宝钧 (不结皮) 红
- 宝钧 (不结皮) 蓝
- 宝钧 (不结皮) 黑
- BG 超耐晒紫
- BG 超耐晒金红
- BG 超耐晒红
- BG 超耐晒桃红
- BG 超耐晒绿
- BG 超耐晒黄
- BG 超耐晒黑
- TNK-PLUS 黑
- TNK-PLUS 蓝
- TNK-PLUS 红
- TNK-PLUS 黄
- TNK-PLUS 中黄
- 新冠军 SAT ON 黑
- 新冠军 SAT ON 蓝
- 新冠军 SAT ON 红
- 新冠军 SAT ON 黄
- 中华商务专用油墨 黑(RR)
- 新尚 黄
- 新尚 红
- 新尚 蓝
- 新尚 黑
- 印象ELEPRINT-R 黄
- 印象ELEPRINT-R 红
- 印象ELEPRINT-R 蓝
- 印象ELEPRINT-R 黑
- 印象ELEPRINT-R 黄 S
- 印象ELEPRINT-R 红 S
- 印象ELEPRINT-R 蓝 S
- 印象ELEPRINT-R 黑 S
- NCP PT PROCESS BLUE C天兰(标准)
- NCP PT REFLEX BLUE C射光兰标准
- NCP PT BLUE 072C 深兰(标准)
- NCP PT GREEN C 绿(标准)



Unless otherwise agreed in writing, this document is issued by the Company subject to its General Conditions of Service printed overleaf, available on request or accessible at <http://www.sgs.com/en/Terms-and-Conditions.aspx> and, for electronic format documents, subject to Terms and Conditions for Electronic Documents at <http://www.sgs.com/en/Terms-and-Conditions/Terms-e-Documents.aspx>. Attention is drawn to the limitation of liability, indemnification and jurisdiction issues defined therein. Any holder of this document is advised that information contained hereon reflects the Company's findings at the time of its intervention only and within the limits of Client's instructions, if any. The Company's sole responsibility is to its Client and this document does not exonerate parties to a transaction from exercising all their rights and obligations under the transaction documents. This document cannot be reproduced except in full, without prior written approval of the Company. Any unauthorized alteration, forgery or falsification of the content or appearance of this document is unlawful and offenders may be prosecuted to the fullest extent of the law. Unless otherwise stated the results shown in this test report refer only to the sample(s) tested.

Attention: To check the authenticity of testing / inspection report & certificate, please contact us at telephone: (86-755) 8307 1443, or email: CN.Doccheck@sgs.com

测试报告

No. CANEC2100856702

日期: 2021年01月20日 第22页,共32页

NCP PT ORANGE 021C 橙(标准)
 NCP PT PURPLE C 红紫 (标准)
 NCP PT RHODAMINE RED C 桃红 标准
 NCP PT RUBINE RED C 洋红(标准)
 NCP PT WARM RED C 金红(标准)
 NCP PT RED 032 C 大红(标准)
 NCP PT VIOLET C 兰紫(标准)
 NCP PT YELLOW C 黄(标准)
 NCP PT YELLOW 012C 深黄(标准)
 NCP P147高浓度黄
 宝凤 姚记大红 S (上海姚记)
 宝凤 03 金光红
 NCP R74 耐晒红(SH)
 NCP D.Y32 耐晒黄 (SH)
 NCP FG MATT VARNISH 消光剂(SH)
 DICPOP W 白(H)
 NCP D.WHITE 白色(SH)
 NCP D.SILVER 银(SH)
 NEW ADVAN-E 红相黄 S
 新金冠-E 2号黄
 宝燕 透明黄 HD SWALLOW YELLOW
 彩冠 透明黄
 宝燕 透明黄HD(SHHP)
 YM100-A 黄 (透明黄)
 山东世纪 黄
 D-PAK 黄
 D-PAK 黄(S)
 宝狮 黄 (内衬)
 宝狮 透明黄
 PACKSAFE 黄 亮光快干环保油墨
 宝鹭 透明黄
 宝象 红相黄
 YM100-A 红相黄
 宝狮 红相黄
 宝燕 HD 红相黄 (内衬)
 宝燕 红相黄 HD
 新-BOX 红相黄(S)
 宝燕 红相黄 HD S
 宝燕 透明黄 HD S
 宝鹭 中黄
 NCP FG MEDIUM 调墨油
 NCP FG MEDIUM 调墨油 (S)
 NCP 冲淡剂(SH)

Unless otherwise agreed in writing, this document is issued by the Company subject to its General Conditions of Service printed overleaf, available on request or accessible at <http://www.sgs.com/en/Terms-and-Conditions.aspx> and, for electronic format documents, subject to Terms and Conditions for Electronic Documents at <http://www.sgs.com/en/Terms-and-Conditions/Terms-e-Document.aspx>. Attention is drawn to the limitation of liability, indemnification and jurisdiction issues defined therein. Any holder of this document is advised that information contained hereon reflects the Company's findings at the time of its intervention only and within the limits of Client's instructions, if any. The Company's sole responsibility is to its Client and this document does not exonerate parties to a transaction from exercising all their rights and obligations under the transaction documents. This document cannot be reproduced except in full, without prior written approval of the Company. Any unauthorized alteration, forgery or falsification of the content or appearance of this document is unlawful and offenders may be prosecuted to the fullest extent of the law. Unless otherwise stated the results shown in this test report refer only to the sample(s) tested.

Attention: To check the authenticity of testing / inspection report & certificate, please contact us at telephone: (86-755) 8307 1443, or email: CN.Doccheck@sgs.com



SGS-CSTC Standards Technical Services Co., Ltd.
 Guangzhou Branch

198 Kezhu Road, Sciencetech Park Guangzhou Economic & Technology Development District, Guangzhou, China 510663
 中国·广州·经济技术开发区科学城科珠路198号 邮编: 510663

t (86-20) 82155555 www.sgsgroup.com.cn
 t (86-20) 82155555 sgs.china@sgs.com

测试报告

No. CANEC2100856702

日期: 2021年01月20日 第23页,共32页

合成纸专用 黑
合成纸专用 蓝
合成纸专用 红
合成纸专用 黄
合成纸专用 白
YM 金银卡专用 黑
YM 金银卡专用 蓝
YM 金银卡专用 红
YM 金银卡专用 黄
YM金银卡专用白墨
DICPOP-E BY 黑
DICPOP-E BY 蓝
DICPOP-E BY 红
DICPOP-E BY 黄
DICPOP-E BY 白
宝丽 特黑
宝凤 光油
GD OP VARNISH 上光油
GW OP VARNISH 上光油 (A)
GW OP VARNISH (耐磨)
GW OP VARNISH 上光油 (A)(再快干)
GW OP VARNISH 上光油 (高光泽)
GW OP VARNISH (紫丹防粘光油)
DICPOP B 黑(H)
DICPOP C 蓝(H)
DICPOP M 红(H)
DICPOP Y 透明黄(H)
DICPOP W 白(H)
YM 金银卡专用 大红
YM 金银卡专用 金红
DICPOP 光油
DICPOP #0 (调墨油)
DICPOP 金光红
DICPOP 大红
DICPOP 中华红
DICPOP 百威专红(浙江豪能)
DICPOP 干燥剂
DICPOP 稀释剂
DICPOP耐磨剂
CK01.5_DICPOP 赤金
CK01.5_DICPOP 青金-MT
PACKSAFE 2号黄
PACKSAFE 红相黄 亮光快干环保油墨

Unless otherwise agreed in writing, this document is issued by the Company subject to its General Conditions of Service printed overleaf, available on request or accessible at <http://www.sgs.com/en/Terms-and-Conditions.aspx> and, for electronic format documents, subject to Terms and Conditions for Electronic Documents at <http://www.sgs.com/en/Terms-and-Conditions/Terms-e-Documents.aspx>. Attention is drawn to the limitation of liability, indemnification and jurisdiction issues defined therein. Any holder of this document is advised that information contained hereon reflects the Company's findings at the time of its intervention only and within the limits of Client's instructions, if any. The Company's sole responsibility is to its Client and this document does not exonerate parties to a transaction from exercising all their rights and obligations under the transaction documents. This document cannot be reproduced except in full, without prior written approval of the Company. Any unauthorized alteration, forgery or falsification of the content or appearance of this document is unlawful and offenders may be prosecuted to the fullest extent of the law. Unless otherwise stated the results shown in this test report refer only to the sample(s) tested.

Attention: To check the authenticity of testing/inspection report & certificate, please contact us at telephone: (86-755) 8307 1443, or email: CN.Doccheck@sgs.com



SGS-CSTC Standards Technical Services Co., Ltd.
Guangzhou Branch

198 Kezhu Road, Sciencetech Park Guangzhou Economic & Technology Development District, Guangzhou, China 510663
中国·广州·经济技术开发区科学城科珠路198号 邮编: 510663

t (86-20) 82155555 www.sgsgroup.com.cn
t (86-20) 82155555 sgs.china@sgs.com

测试报告

No. CANEC2100856702

日期: 2021年01月20日 第24页,共32页

NEW ADVAN-E 红相黄 (西口)
 宝丽 黑 (H型)
 宝燕 中黄 SWALLOW YELLOW
 宝燕 中黄 SWALLOW YELLOW
 YM100-A 黄 (中黄)
 DK0190_通彩 红相黄 (内衬)
 NCP PT BLUE 072C 深兰(标准) S
 NCP PT GREEN C 绿(标准) S
 PACKSAFE 红相黄 亮快干环保油墨 S
 PACKSAFE 黄 亮快干环保油墨 S
 NEW CAPS-G CY BLACK S
 NEW CAPS-G BLACK CY
 NCP TIGER RICH GOLD 青金
 DICPOP 青金
 POLARIS BLACK 宝丽黑
 NCP 撤淡剂
 SL 剂
 REDUCER 稀释剂
 JP 去粘剂
 CM 干燥剂
 耐刮擦助剂
 *0 调墨油
 HI-GLOSS MEDIUM 高光调墨
 顺昌无蜡调墨油
 N21 Extender 亮光浆
 大鹏金红
 东柏金红
 HF YELLOW 黄
 HF NO.2 YELLOW 黄
 HF NO.2 YELLOW 黄-H
 尚彩 中黄
 尚彩 黄
 尚彩 红
 尚彩 蓝
 尚彩 黑
 宝鹤 黑
 宝鹤 蓝
 新境界 黄
 新境界 红
 新境界 蓝
 新境界 黑
 耐晒金红 NO.2
 XHY 黄 S

Unless otherwise agreed in writing, this document is issued by the Company subject to its General Conditions of Service printed overleaf, available on request or accessible at <http://www.sgs.com/en/Terms-and-Conditions.aspx> and, for electronic format documents, subject to Terms and Conditions for Electronic Documents at <http://www.sgs.com/en/Terms-and-Conditions/Terms-e-Documents.aspx>. Attention is drawn to the limitation of liability, indemnification and jurisdiction issues defined therein. Any holder of this document is advised that information contained hereon reflects the Company's findings at the time of its intervention only and within the limits of Client's instructions, if any. The Company's sole responsibility is to its Client and this document does not exonerate parties to a transaction from exercising all their rights and obligations under the transaction documents. This document cannot be reproduced except in full, without prior written approval of the Company. Any unauthorized alteration, forgery or falsification of the content or appearance of this document is unlawful and offenders may be prosecuted to the fullest extent of the law. Unless otherwise stated the results shown in this test report refer only to the sample(s) tested.

Attention: To check the authenticity of testing / inspection report & certificate, please contact us at telephone: (86-755) 8307 1443, or email: CN.Doccheck@sgs.com



SGS-CSTC Standards Technical Services Co., Ltd.
 Guangzhou Branch / 广州分公司 / 广州检测实验室

198 Kezhu Road, Sciencetech Park Guangzhou Economic & Technology Development District, Guangzhou, China 510663
 中国·广州·经济技术开发区科学城科珠路198号 邮编: 510663

t (86-20) 82155555 www.sgs.com.cn
 t (86-20) 82155555 sgs.china@sgs.com

测试报告

No. CANEC2100856702

日期: 2021年01月20日 第25页,共32页

XHY 红 S
XHY 蓝 S
XHY 黑 S
新冠军 SAT ON 黑 S
新冠军 SAT ON 蓝 S
新冠军 SAT ON 红 S
新冠军 SAT ON NO.2红 S
新冠军 SAT ON NO.2红
新冠军 SAT ON 黄 S
宝印 QD 黄 S
宝印 QD 红 S
宝印 QD NO.2红
宝印 QD NO.2红 S
宝印 QD 蓝 S
宝印 QD黑 S
新宝马 黄
新宝马 红
新宝马 蓝
新宝马 黑
尚彩 中黄-H
尚彩 黄-H
尚彩 红-H
尚彩 蓝-H
尚彩 黑-H
新宝龙-TK 黄
新宝龙-TK 红
新宝龙-TK 蓝
新宝龙-TK 黑
福印 中黄 S
福印 黄 S
福印 红 S
福印 蓝 S
福印 黑 S
印象ELEPRINT-R NO.2 红 S
印象ELEPRINT-R NO.2 红
NEW CAPS-G NPZ 特黑
NEW CAPS-G NPZ 特黑 S
雅韵 黄 茉莉香(KD)
雅韵 红 茉莉香(KD)
雅韵 蓝 茉莉香(KD)
雅韵 黑 茉莉香(KD)
雅韵 黄 焦香松木香(KD)
雅韵 红 焦香松木香(KD)

Unless otherwise agreed in writing, this document is issued by the Company subject to its General Conditions of Service printed overleaf, available on request or accessible at <http://www.sgs.com/en/Terms-and-Conditions.aspx> and, for electronic format documents, subject to Terms and Conditions for Electronic Documents at <http://www.sgs.com/en/Terms-and-Conditions/Terms-e-Documents.aspx>. Attention is drawn to the limitation of liability, indemnification and jurisdiction issues defined therein. Any holder of this document is advised that information contained hereon reflects the Company's findings at the time of its intervention only and within the limits of Client's instructions, if any. The Company's sole responsibility is to its Client and this document does not exonerate parties to a transaction from exercising all their rights and obligations under the transaction documents. This document cannot be reproduced except in full, without prior written approval of the Company. Any unauthorized alteration, forgery or falsification of the content or appearance of this document is unlawful and offenders may be prosecuted to the fullest extent of the law. Unless otherwise stated the results shown in this test report refer only to the sample(s) tested.

Attention: To check the authenticity of testing/inspection report & certificate, please contact us at telephone: (86-755) 8307 1443, or email: CN.Doccheck@sgs.com

198 Kezhu Road, Sciencetech Park Guangzhou Economic & Technology Development District, Guangzhou, China 510663
中国·广州·经济技术开发区科学城科珠路198号 邮编: 510663

t (86-20) 82155555 www.sgs.com.cn
t (86-20) 82155555 sgs.china@sgs.com



测试报告

No. CANEC2100856702

日期: 2021年01月20日 第26页,共32页

雅韵 蓝 焦香松木香(KD)
雅韵 黑 焦香松木香(KD)
雅韵 黄 香草香(KD)
雅韵 红 香草香(KD)
雅韵 蓝 香草香(KD)
雅韵 黑 香草香(KD)
雅韵 黄 玫瑰香(KD)
雅韵 红 玫瑰香(KD)
雅韵 蓝 玫瑰香(KD)
雅韵 黑 玫瑰香(KD)
雅韵 黄 柠檬香(KD)
雅韵 红 柠檬香(KD)
雅韵 蓝 柠檬香(KD)
雅韵 黑 柠檬香(KD)
新金冠 PH 四色黄
新金冠 PH 四色红
新金冠 PH 四色蓝
新金冠 PH 四色黑
福印 NO.2 红 S
宝印 QD 特黑
宝印 QD 特黑 S
印象ELEPRINT-R 特黑
胶印亮光快干油墨 (长荣专用) 黄
胶印亮光快干油墨 (长荣专用) 红
胶印亮光快干油墨 (长荣专用) 蓝
胶印亮光快干油墨 (长荣专用) 黑
New Pegasus 新飞马 No.2 黄 (ND)
New Pegasus 新飞马 No.2 红 (ND)
New Pegasus 新飞马 No.2 蓝 (ND)
New Pegasus 新飞马 No.2 黑 (ND)
QuickPrint520 合印亮光快干环保油墨 黄
QuickPrint520 合印亮光快干环保油墨 红
QuickPrint520 合印亮光快干环保油墨 蓝
QuickPrint520 合印亮光快干环保油墨 黑
BookSafe 书香低气味环保油墨 黄
BookSafe 书香低气味环保油墨 红
BookSafe 书香低气味环保油墨 蓝
BookSafe 书香低气味环保油墨 黑
NEW CAPS-G NPZE HF 黄
海德堡专供 黄 (快干型)
海德堡专供 红 (快干型)
海德堡专供 蓝 (快干型)
海德堡专供 黑 (快干型)



Unless otherwise agreed in writing, this document is issued by the Company subject to its General Conditions of Service printed overleaf, available on request or accessible at <http://www.sgs.com/en/Terms-and-Conditions.aspx> and, for electronic format documents, subject to Terms and Conditions for Electronic Documents at <http://www.sgs.com/en/Terms-and-Conditions/Terms-e-Documents.aspx>. Attention is drawn to the limitation of liability, indemnification and jurisdiction issues defined therein. Any holder of this document is advised that information contained hereon reflects the Company's findings at the time of its intervention only and within the limits of Client's instructions, if any. The Company's sole responsibility is to its Client and this document does not exonerate parties to a transaction from exercising all their rights and obligations under the transaction documents. This document cannot be reproduced except in full, without prior written approval of the Company. Any unauthorized alteration, forgery or falsification of the content or appearance of this document is unlawful and offenders may be prosecuted to the fullest extent of the law. Unless otherwise stated the results shown in this test report refer only to the sample(s) tested.

Attention: To check the authenticity of testing/inspection report & certificate, please contact us at telephone: (86-755) 8307 1443, or email: CN.Doccheck@sgs.com

测试报告

No. CANEC2100856702

日期: 2021年01月20日 第27页,共32页

- 海德堡专供 黄 (快干型_2)
- 海德堡专供 红 (快干型_2)
- 海德堡专供 蓝 (快干型_2)
- 海德堡专供 黑 (快干型_2)
- DIC WY四色黑油墨
- DIC WY四色黄油墨
- DIC WY四色红油墨
- DIC WY四色蓝油墨
- New Tiger 新宝虎 BS 黑-H-1
- NEW CAPS-G NPZ E 特黑
- NEW CAPS-G NPZ E 特黑 S
- 雅韵 黄 茉莉香(KD)
- 雅韵 红 茉莉香(KD)
- 雅韵 蓝 茉莉香(KD)
- 雅韵 黑 茉莉香(KD)
- 雅韵 黄 焦香松木香(KD)
- 雅韵 红 焦香松木香(KD)
- 雅韵 蓝 焦香松木香(KD)
- 雅韵 黑 焦香松木香(KD)
- 雅韵 黄 香草香(KD)
- 雅韵 红 香草香(KD)
- 雅韵 蓝 香草香(KD)
- 雅韵 黑 香草香(KD)
- 雅韵 黄 玫瑰香(KD)
- 雅韵 红 玫瑰香(KD)
- 雅韵 蓝 玫瑰香(KD)
- 雅韵 黑 玫瑰香(KD)
- 雅韵 黄 柠檬香(KD)
- 雅韵 红 柠檬香(KD)
- 雅韵 蓝 柠檬香(KD)
- 雅韵 黑 柠檬香(KD)
- 宝鲸 NO.2 红
- 新BOX 中黄
- New Pegasus 新飞马 红相黄-H
- 图腾 合印 200型 黄
- 图腾 合印 200型 红
- 图腾 合印 200型 蓝
- 图腾 合印 200型 黑
- 福印 NO.2 红
- PHOENIX 05 宝凤 05-04 大红
- PHOENIX 宝凤 BO-230 透明黄
- DIC WY 四色黄 (哑粉纸专用)
- DIC WY 四色黄 低卤 (哑粉纸专用)



Unless otherwise agreed in writing, this document is issued by the Company subject to its General Conditions of Service printed overleaf, available on request or accessible at <http://www.sgs.com/en/Terms-and-Conditions.aspx> and, for electronic format documents, subject to Terms and Conditions for Electronic Documents at <http://www.sgs.com/en/Terms-and-Conditions/Terms-e-Documents.aspx>. Attention is drawn to the limitation of liability, indemnification and jurisdiction issues defined therein. Any holder of this document is advised that information contained hereon reflects the Company's findings at the time of its intervention only and within the limits of Client's instructions, if any. The Company's sole responsibility is to its Client and this document does not exonerate parties to a transaction from exercising all their rights and obligations under the transaction documents. This document cannot be reproduced except in full, without prior written approval of the Company. Any unauthorized alteration, forgery or falsification of the content or appearance of this document is unlawful and offenders may be prosecuted to the fullest extent of the law. Unless otherwise stated the results shown in this test report refer only to the sample(s) tested.

Attention: To check the authenticity of testing/inspection report & certificate, please contact us at telephone: (86-755) 8307 1443, or email: CN.Doccheck@sgs.com

测试报告

No. CANEC2100856702

日期: 2021年01月20日 第28页,共32页

DIC WY 四色红 (哑粉纸专用)
 DIC WY 四色蓝 (哑粉纸专用)
 DIC WY 四色黑 (哑粉纸专用)
 PHOENIX 宝凤 BO-133 金红
 PHOENIX 宝凤 BO-134 大红
 PHOENIX 宝凤 MX-182 金红
 PHOENIX 宝凤 MX-188 桔红
 PHOENIX 宝凤 MX-381 孔蓝
 PHOENIX 宝凤 MX-681 绿
 PHOENIX 宝凤 MX-388 品兰
 PHOENIX 宝凤 BO-131 桃红
 福龙 特黑 S
 PACKSAFE 亮彩 低气味环保油墨 黄
 PACKSAFE 亮彩 低气味环保油墨 红
 PACKSAFE 亮彩 低气味环保油墨 蓝
 PACKSAFE 亮彩 低气味环保油墨 黑
 HF 金红
 赛飞扬 410 黄
 赛飞扬 410 红
 赛飞扬 410 蓝
 赛飞扬 410 黑
 新金冠 No.1RR HF 黄 (低卤)
 格瑞尔 (GREONE) 800 不结皮环保油墨 NO.2黄
 中天印刷物资专供 黄色
 中天印刷物资专供 红色
 金鹏 粉灰卡 黑
 金鹏 粉灰卡 红
 金鹏 粉灰卡 黄
 金鹏 粉灰卡 蓝
 金鹏 铜版纸 黑
 金鹏 铜版纸 红
 金鹏 铜版纸 黄
 金鹏 铜版纸 蓝
 SOY 联机耐磨光油
 WEB COLD (冷固) H 系列
 WEB COLD (冷固) 中间色系列
 臻澜 ET-360 低气味黄
 臻澜 ET-360 低气味红
 臻澜 ET-360 低气味蓝
 臻澜 ET-360 低气味黑
 绿印 黄
 绿印 红
 绿印 蓝

Unless otherwise agreed in writing, this document is issued by the Company subject to its General Conditions of Service printed overleaf, available on request or accessible at <http://www.sgs.com/en/Terms-and-Conditions.aspx> and, for electronic format documents, subject to Terms and Conditions for Electronic Documents at <http://www.sgs.com/en/Terms-and-Conditions/Terms-e-Documents.aspx>. Attention is drawn to the limitation of liability, indemnification and jurisdiction issues defined therein. Any holder of this document is advised that information contained hereon reflects the Company's findings at the time of its intervention only and within the limits of Client's instructions, if any. The Company's sole responsibility is to its Client and this document does not exonerate parties to a transaction from exercising all their rights and obligations under the transaction documents. This document cannot be reproduced except in full, without prior written approval of the Company. Any unauthorized alteration, forgery or falsification of the content or appearance of this document is unlawful and offenders may be prosecuted to the fullest extent of the law. Unless otherwise stated the results shown in this test report refer only to the sample(s) tested.

Attention: To check the authenticity of testing / inspection report & certificate, please contact us at telephone: (86-755) 8307 1443, or email: CN.Doccheck@sgs.com

198 Kezhu Road, Sciencetech Park Guangzhou Economic & Technology Development District, Guangzhou, China 510663
 中国·广州·经济技术开发区科学城科珠路198号 邮编: 510663

t (86-20) 82155555 www.sgs.com.cn
 t (86-20) 82155555 sgs.china@sgs.com



测试报告

No. CANEC2100856702

日期: 2021年01月20日 第29页,共32页

绿印 黑
绿尚 E 低气味环保油墨 黑
绿尚 E 低气味环保油墨 红
绿尚 E 低气味环保油墨 黄
绿尚 E 低气味环保油墨 蓝
绿尚 E 低气味环保油墨 黑 S
绿尚 E 低气味环保油墨 红 S
绿尚 E 低气味环保油墨 黄 S
绿尚 E 低气味环保油墨 蓝 S
绿尚 低气味环保油墨 黑
绿尚 低气味环保油墨 红
绿尚 低气味环保油墨 黄
绿尚 低气味环保油墨 蓝
绿尚 低气味环保油墨 特黑
绿尚 低气味环保油墨 红相黄
BookSafe 书香金冠 低气味大豆环保油墨 黄
BookSafe 书香金冠 低气味大豆环保油墨 黑
BookSafe 书香金冠 低气味大豆环保油墨 红
BookSafe 书香金冠 低气味大豆环保油墨 蓝
超耐晒黄 NO.2
超耐晒红 NO.2
Mixture



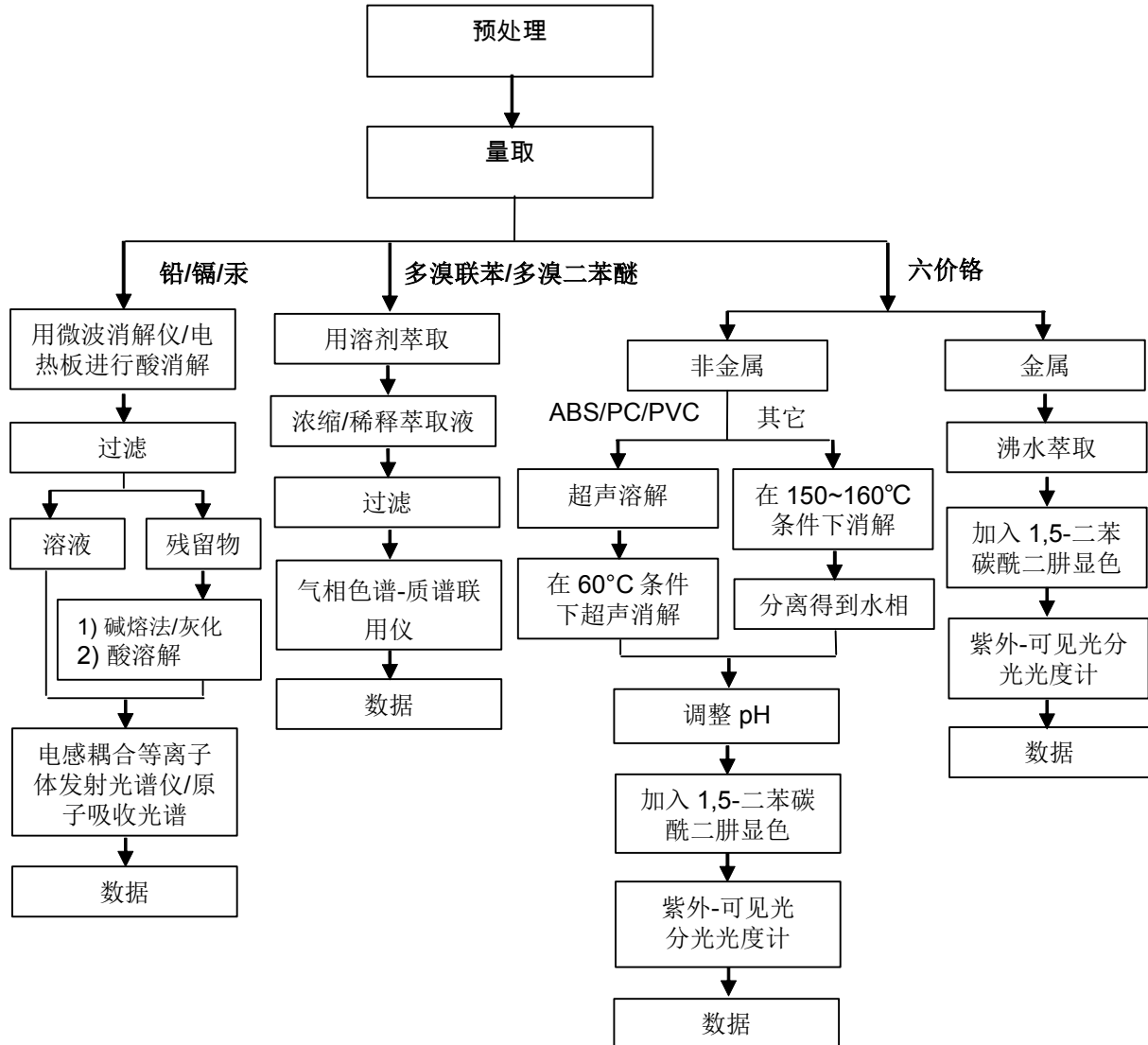
Unless otherwise agreed in writing, this document is issued by the Company subject to its General Conditions of Service printed overleaf, available on request or accessible at <http://www.sgs.com/en/Terms-and-Conditions.aspx> and, for electronic format documents, subject to Terms and Conditions for Electronic Documents at <http://www.sgs.com/en/Terms-and-Conditions/Terms-e-Documents.aspx>. Attention is drawn to the limitation of liability, indemnification and jurisdiction issues defined therein. Any holder of this document is advised that information contained hereon reflects the Company's findings at the time of its intervention only and within the limits of Client's instructions, if any. The Company's sole responsibility is to its Client and this document does not exonerate parties to a transaction from exercising all their rights and obligations under the transaction documents. This document cannot be reproduced except in full, without prior written approval of the Company. Any unauthorized alteration, forgery or falsification of the content or appearance of this document is unlawful and offenders may be prosecuted to the fullest extent of the law. Unless otherwise stated the results shown in this test report refer only to the sample(s) tested.

Attention: To check the authenticity of testing / inspection report & certificate, please contact us at telephone: (86-755) 8307 1443, or email: CN.Doccheck@sgs.com

附件

Pb/Cd/Hg/Cr⁶⁺/PBBs/PBDEs 测试流程图

1) 样品按照下述流程被完全消解（六价铬和多溴联苯/多溴二苯醚测试除外）。

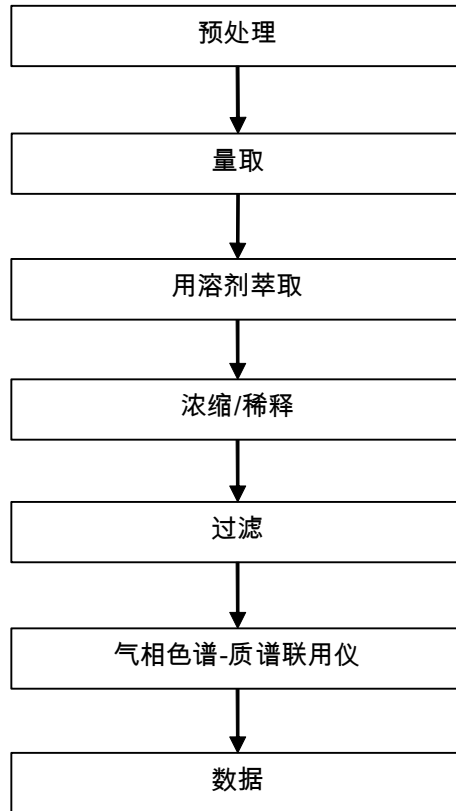


Unless otherwise agreed in writing, this document is issued by the Company subject to its General Conditions of Service printed overleaf, available on request or accessible at <http://www.sgs.com/en/Terms-and-Conditions.aspx> and, for electronic format documents, subject to Terms and Conditions for Electronic Documents at <http://www.sgs.com/en/Terms-and-Conditions/Terms-e-Documents.aspx>. Attention is drawn to the limitation of liability, indemnification and jurisdiction issues defined therein. Any holder of this document is advised that information contained hereon reflects the Company's findings at the time of its intervention only and within the limits of Client's instructions, if any. The Company's sole responsibility is to its Client and this document does not exonerate parties to a transaction from exercising all their rights and obligations under the transaction documents. This document cannot be reproduced except in full, without prior written approval of the Company. Any unauthorized alteration, forgery or falsification of the content or appearance of this document is unlawful and offenders may be prosecuted to the fullest extent of the law. Unless otherwise stated the results shown in this test report refer only to the sample(s) tested.

Attention: To check the authenticity of testing / inspection report & certificate, please contact us at telephone: (86-755) 8307 1443, or email: CN.Doccheck@sgs.com

附件

Phthalates 测试流程图



Unless otherwise agreed in writing, this document is issued by the Company subject to its General Conditions of Service printed overleaf, available on request or accessible at <http://www.sgs.com/en/Terms-and-Conditions.aspx> and, for electronic format documents, subject to Terms and Conditions for Electronic Documents at <http://www.sgs.com/en/Terms-and-Conditions/Terms-e-Documents.aspx>. Attention is drawn to the limitation of liability, indemnification and jurisdiction issues defined therein. Any holder of this document is advised that information contained hereon reflects the Company's findings at the time of its intervention only and within the limits of Client's instructions, if any. The Company's sole responsibility is to its Client and this document does not exonerate parties to a transaction from exercising all their rights and obligations under the transaction documents. This document cannot be reproduced except in full, without prior written approval of the Company. Any unauthorized alteration, forgery or falsification of the content or appearance of this document is unlawful and offenders may be prosecuted to the fullest extent of the law. Unless otherwise stated the results shown in this test report refer only to the sample(s) tested.

Attention: To check the authenticity of testing / inspection report & certificate, please contact us at telephone: (86-755) 8307 1443, or email: CN.Doccheck@sgs.com

测试报告

No. CANEC2100856702

日期: 2021年01月20日 第32页,共32页

样品照片:



此照片仅限于随SGS正本报告使用

*** 报告完 ***



Unless otherwise agreed in writing, this document is issued by the Company subject to its General Conditions of Service printed overleaf, available on request or accessible at <http://www.sgs.com/en/Terms-and-Conditions.aspx> and, for electronic format documents, subject to Terms and Conditions for Electronic Documents at <http://www.sgs.com/en/Terms-and-Conditions/Terms-e-Documents.aspx>. Attention is drawn to the limitation of liability, indemnification and jurisdiction issues defined therein. Any holder of this document is advised that information contained hereon reflects the Company's findings at the time of its intervention only and within the limits of Client's instructions, if any. The Company's sole responsibility is to its Client and this document does not exonerate parties to a transaction from exercising all their rights and obligations under the transaction documents. This document cannot be reproduced except in full, without prior written approval of the Company. Any unauthorized alteration, forgery or falsification of the content or appearance of this document is unlawful and offenders may be prosecuted to the fullest extent of the law. Unless otherwise stated the results shown in this test report refer only to the sample(s) tested.

Attention: To check the authenticity of testing / inspection report & certificate, please contact us at telephone: (86-755) 8307 1443, or email: CN.Doccheck@sgs.com