

## Test Report

No. CANEC2100856701

Date: 20 Jan 2021

Page 1 of 32

SHENZHEN-DIC CO.,LTD.

1035 NANSHAN ROAD,NANSHAN SHENZHEN CITY,CHINA

The following sample(s) was/were submitted and identified on behalf of the clients as : Dic ink mixture

SGS Job No. : CP21-002064 - SZ

Client Ref. Info. : PLEASE SEE REMARK

Date of Sample Received : 15 Jan 2021

Testing Period : 15 Jan 2021 - 20 Jan 2021

Test Requested : Selected test(s) as requested by client.

Test Method : Please refer to next page(s).

Test Results : Please refer to next page(s).

Conclusion : Based on the performed tests on submitted sample(s), the results of Lead, Mercury, Cadmium, Hexavalent chromium, Polybrominated biphenyls (PBBs), Polybrominated diphenyl ethers (PBDEs) and Phthalates such as Bis(2-ethylhexyl) phthalate (DEHP) , Butyl benzyl phthalate (BBP), Dibutyl phthalate (DBP) , and Diisobutyl phthalate (DIBP) comply with the limits as set by RoHS Directive (EU) 2015/863 amending Annex II to Directive 2011/65/EU.

Signed for and on behalf of  
SGS-CSTC Standards Technical Services Co., Ltd. Guangzhou Branch

*Kelly Qu*

Kelly Qu  
Approved Signatory

scan to see the report



CANEC2100856701



Unless otherwise agreed in writing, this document is issued by the Company subject to its General Conditions of Service printed overleaf, available on request or accessible at <http://www.sgs.com/en/Terms-and-Conditions.aspx> and, for electronic format documents, subject to Terms and Conditions for Electronic Documents at <http://www.sgs.com/en/Terms-and-Conditions/Terms-e-Documents.aspx>. Attention is drawn to the limitation of liability, indemnification and jurisdiction issues defined therein. Any holder of this document is advised that information contained hereon reflects the Company's findings at the time of its intervention only and within the limits of Client's instructions, if any. The Company's sole responsibility is to its Client and this document does not exonerate parties to a transaction from exercising all their rights and obligations under the transaction documents. This document cannot be reproduced except in full, without prior written approval of the Company. Any unauthorized alteration, forgery or falsification of the content or appearance of this document is unlawful and offenders may be prosecuted to the fullest extent of the law. Unless otherwise stated the results shown in this test report refer only to the sample(s) tested.

Attention: To check the authenticity of testing / inspection report & certificate, please contact us at telephone: (86-755) 8307 1443, or email: [CN.Doccheck@sgs.com](mailto:CN.Doccheck@sgs.com)

SGS-CSTC Standards Technical Services Co., Ltd.  
Guangzhou Branch / 广州分公司 / 检验检测专用章

198 Kazhu Road, Scientech Park Guangzhou Economic & Technology Development District, Guangzhou, China 510663  
中国·广州·经济技术开发区科学城科珠路198号 邮编: 510663

t (86-20) 82155555 www.sgsgroup.com.cn  
t (86-20) 82155555 sgs.china@sgs.com

## Test Report

No. CANEC2100856701

Date: 20 Jan 2021

Page 2 of 32

Test Results :

### Test Part Description :

Specimen No.	SGS Sample ID	Description
SN1	CAN21-008567.001	Black paste

Remarks :

- (1) 1 mg/kg = 1 ppm = 0.0001%
- (2) MDL = Method Detection Limit
- (3) ND = Not Detected ( < MDL )
- (4) "-" = Not Regulated

### RoHS Directive (EU) 2015/863 amending Annex II to Directive 2011/65/EU

Test Method : With reference to IEC 62321-4:2013+A1:2017, IEC 62321-5:2013, IEC 62321-7-2:2017 , IEC 62321-6:2015 and IEC 62321-8:2017, analyzed by ICP-OES , UV-Vis and GC-MS .

Test Item(s)	Limit	Unit	MDL	001
Cadmium (Cd)	100	mg/kg	2	ND
Lead (Pb)	1,000	mg/kg	2	ND
Mercury (Hg)	1,000	mg/kg	2	ND
Hexavalent Chromium (CrVI)	1,000	mg/kg	8	ND
Sum of PBBs	1,000	mg/kg	-	ND
Monobromobiphenyl	-	mg/kg	5	ND
Dibromobiphenyl	-	mg/kg	5	ND
Tribromobiphenyl	-	mg/kg	5	ND
Tetrabromobiphenyl	-	mg/kg	5	ND
Pentabromobiphenyl	-	mg/kg	5	ND
Hexabromobiphenyl	-	mg/kg	5	ND
Heptabromobiphenyl	-	mg/kg	5	ND
Octabromobiphenyl	-	mg/kg	5	ND
Nonabromobiphenyl	-	mg/kg	5	ND
Decabromobiphenyl	-	mg/kg	5	ND
Sum of PBDEs	1,000	mg/kg	-	ND
Monobromodiphenyl ether	-	mg/kg	5	ND
Dibromodiphenyl ether	-	mg/kg	5	ND
Tribromodiphenyl ether	-	mg/kg	5	ND
Tetrabromodiphenyl ether	-	mg/kg	5	ND
Pentabromodiphenyl ether	-	mg/kg	5	ND



Unless otherwise agreed in writing, this document is issued by the Company subject to its General Conditions of Service printed overleaf, available on request or accessible at <http://www.sgs.com/en/Terms-and-Conditions.aspx> and, for electronic format documents, subject to Terms and Conditions for Electronic Documents at <http://www.sgs.com/en/Terms-and-Conditions/Terms-e-Document.aspx>. Attention is drawn to the limitation of liability, indemnification and jurisdiction issues defined therein. Any holder of this document is advised that information contained hereon reflects the Company's findings at the time of its intervention only and within the limits of Client's instructions, if any. The Company's sole responsibility is to its Client and this document does not exonerate parties to a transaction from exercising all their rights and obligations under the transaction documents. This document cannot be reproduced except in full, without prior written approval of the Company. Any unauthorized alteration, forgery or falsification of the content or appearance of this document is unlawful and offenders may be prosecuted to the fullest extent of the law. Unless otherwise stated the results shown in this test report refer only to the sample(s) tested.

Attention: To check the authenticity of testing/inspection report & certificate, please contact us at telephone: (86-755) 8307 1443, or email: [CN.Doccheck@sgs.com](mailto:CN.Doccheck@sgs.com)

SGS-CSI Standards Technical Services Co., Ltd.  
Guangzhou Branch, Technical Services Co., Ltd.

198 Kezhu Road, Science Park Guangzhou Economic & Technology Development District, Guangzhou, China 510663  
中国·广州·经济技术开发区科学城科珠路198号 邮编: 510663

t (86-20) 82155555 www.sgsgroup.com.cn  
t (86-20) 82155555 sgs.china@sgs.com

## Test Report

No. CANEC2100856701

Date: 20 Jan 2021

Page 3 of 32

Test Item(s)	Limit	Unit	MDL	001
Hexabromodiphenyl ether	-	mg/kg	5	ND
Heptabromodiphenyl ether	-	mg/kg	5	ND
Octabromodiphenyl ether	-	mg/kg	5	ND
Nonabromodiphenyl ether	-	mg/kg	5	ND
Decabromodiphenyl ether	-	mg/kg	5	ND
Dibutyl phthalate (DBP)	1000	mg/kg	50	ND
Butyl benzyl phthalate (BBP)	1000	mg/kg	50	ND
Bis (2-ethylhexyl) phthalate (DEHP)	1000	mg/kg	50	ND
Diisobutyl Phthalates (DIBP)	1000	mg/kg	50	ND

## Notes :

(1) The maximum permissible limit is quoted from RoHS Directive (EU) 2015/863. IEC 62321 series is equivalent to EN 62321 series

[https://www.cenelec.eu/dyn/www/f?p=104:30:1742232870351101:::FSP\\_ORG\\_ID,FSP\\_LANG\\_ID:1258637,25](https://www.cenelec.eu/dyn/www/f?p=104:30:1742232870351101:::FSP_ORG_ID,FSP_LANG_ID:1258637,25)

(2) The restriction of DEHP, BBP, DBP and DIBP shall apply to medical devices, including in vitro medical devices, and monitoring and control instruments, including industrial monitoring and control instruments, from 22 July 2021.

(3) The restriction of DEHP, BBP, DBP and DIBP shall not apply to toys which are already subject to the restriction of DEHP, BBP, DBP and DIBP through entry 51 of Annex XVII to Regulation (EC) No 1907/2006.



Unless otherwise agreed in writing, this document is issued by the Company subject to its General Conditions of Service printed overleaf, available on request or accessible at <http://www.sgs.com/en/Terms-and-Conditions.aspx> and, for electronic format documents, subject to Terms and Conditions for Electronic Documents at <http://www.sgs.com/en/Terms-and-Conditions/Terms-e-Document.aspx>. Attention is drawn to the limitation of liability, indemnification and jurisdiction issues defined therein. Any holder of this document is advised that information contained hereon reflects the Company's findings at the time of its intervention only and within the limits of Client's instructions, if any. The Company's sole responsibility is to its Client and this document does not exonerate parties to a transaction from exercising all their rights and obligations under the transaction documents. This document cannot be reproduced except in full, without prior written approval of the Company. Any unauthorized alteration, forgery or falsification of the content or appearance of this document is unlawful and offenders may be prosecuted to the fullest extent of the law. Unless otherwise stated the results shown in this test report refer only to the sample(s) tested.

Attention: To check the authenticity of testing/inspection report & certificate, please contact us at telephone: (86-755) 8307 1443, or email: [CN.Doccheck@sgs.com](mailto:CN.Doccheck@sgs.com)

SGS-CTC Standards Technical Services Co., Ltd.  
Guangzhou Branch, Inspection & Testing Services

198 Kezhu Road, Science Park Guangzhou Economic & Technology Development District, Guangzhou, China 510663  
中国·广州·经济技术开发区科学城科珠路198号 邮编: 510663

t (86-20) 82155555 www.sgsgroup.com.cn  
t (86-20) 82155555 sgs.china@sgs.com

## Test Report

No. CANEC2100856701

Date: 20 Jan 2021

Page 4 of 32

REMARK: (in Chinese as 备注)

福思 FUSION-G YELLOW 黄  
福思 FUSION-G MAGENTA 红  
福思 FUSION-G CYAN 蓝  
福思 FUSION-G BLACK 黑  
福思 FUSION-G ST YELLOW 黄  
福思 FUSION-G ST MAGENTA 红  
福思 FUSION-G ST CYAN 蓝  
福思 FUSION-G ST BLACK 黑  
福思 FUSION-G DOC SZ YELLOW 黄  
福思 FUSION-G DOC SZ MAGENTA 红  
福思 FUSION-G DOC SZ CYAN 蓝  
福思 FUSION-G DOC SZ BLACK 黑  
新时代 NEW ERA-G YELLOW 黄  
新时代 NEW ERA-G MAGENTA 红  
新时代 NEW ERA-G CYAN 蓝  
新时代 NEW ERA-G BLACK 黑  
新金冠 NEW CAPS-G AHG YELLOW 黄  
新金冠 NEW CAPS-G AHG MAGENTA 红  
新金冠 NEW CAPS-G AHG CYAN 蓝  
新金冠 NEW CAPS-G AHG BLACK 黑  
新金冠 NEW CAPS-G AHG RR YELLOW 黄  
新金冠 NEW CAPS-G AHG RR MAGENTA 红  
新金冠 NEW CAPS-G AHG RR CYAN 蓝  
新金冠 NEW CAPS-G AHG RR BLACK 黑  
新金冠 NEW CAPS-G HG BLACK 黑  
新金冠 NEW CAPS-G HG CYAN 蓝  
新金冠 NEW CAPS-G HG MAGENTA 红  
新金冠 NEW CAPS-G HG YELLOW 黄  
新金冠 NEW CAPS-G QD YELLOW 黄  
新金冠 NEW CAPS-G QD MAGENTA 红  
新金冠 NEW CAPS-G QD CYAN 蓝  
新金冠 NEW CAPS-G QD BLACK 黑  
新金冠 NEW CAPS-G DQW YELLOW 黄  
新金冠 NEW CAPS-G DQW MAGENTA 红  
新金冠 NEW CAPS-G DQW CYAN 蓝  
新金冠 NEW CAPS-G DQW BLACK 黑  
新金冠 NEW CAPS-G QD YELLOW 中黄  
新金冠 NEW CAPS-G QD YELLOW No.2黄  
新金冠 NEW CAPS-G YELLOW 黄色  
新金冠 NEW CAPS-G MAGENTA 红色  
新金冠 NEW CAPS-G CYAN 蓝色  
新金冠 NEW CAPS-G BLACK 黑色



Unless otherwise agreed in writing, this document is issued by the Company subject to its General Conditions of Service printed overleaf, available on request or accessible at <http://www.sgs.com/en/Terms-and-Conditions.aspx> and, for electronic format documents, subject to Terms and Conditions for Electronic Documents at <http://www.sgs.com/en/Terms-and-Conditions/Terms-e-Documents.aspx>. Attention is drawn to the limitation of liability, indemnification and jurisdiction issues defined therein. Any holder of this document is advised that information contained hereon reflects the Company's findings at the time of its intervention only and within the limits of Client's instructions, if any. The Company's sole responsibility is to its Client and this document does not exonerate parties to a transaction from exercising all their rights and obligations under the transaction documents. This document cannot be reproduced except in full, without prior written approval of the Company. Any unauthorized alteration, forgery or falsification of the content or appearance of this document is unlawful and offenders may be prosecuted to the fullest extent of the law. Unless otherwise stated the results shown in this test report refer only to the sample(s) tested.

Attention: To check the authenticity of testing/inspection report & certificate, please contact us at telephone: (86-755) 8307 1443, or email: [CN.Doccheck@sgs.com](mailto:CN.Doccheck@sgs.com)

SGS-CSTC Standards Technical Services Co., Ltd.  
Guangzhou Branch

198 Kezhu Road, Sciencetech Park Guangzhou Economic & Technology Development District, Guangzhou, China 510663  
中国·广州·经济技术开发区科学城科珠路198号 邮编: 510663

t (86-20) 82155555 www.sgsgroup.com.cn  
t (86-20) 82155555 sgs.china@sgs.com



## Test Report

No. CANEC2100856701

Date: 20 Jan 2021

Page 5 of 32

新金冠 NEW CAPS-G KT YELLOW 黄色  
新金冠 NEW CAPS-G KT MAGENTA 红色  
新金冠 NEW CAPS-G KT CYAN 蓝色  
新金冠 NEW CAPS-G KT BLACK 黑色  
新金冠 NEW CAPS-G NO.1 RR YELLOW 黄色  
新金冠 NEW CAPS-G NO.1 RR MAGENTA 红色  
新金冠 NEW CAPS-G NO.1 RR CYAN 蓝色  
新金冠 NEW CAPS-G NO.1 RR BLACK 黑色  
新金冠 NEW CAPS-G印通天下专用 黑  
新金冠 NEW CAPS-G印通天下专用 蓝  
新金冠 NEW CAPS-G印通天下专用 红  
新金冠 NEW CAPS-G印通天下专用 黄  
福龙 DRAGON-FC SOY YELLOW 黄  
福龙 DRAGON-FC SOY 耐晒黄  
福龙 DRAGON-FC SOY M.Y 中黄  
福龙 DRAGON-FC SOY MAGENTA 红  
福龙 DRAGON-FC SOY CYAN 蓝  
福龙 DRAGON-FC SOY BLACK 黑  
福龙 DRAGON-FC SOY RSS YELLOW 黄  
福龙 DRAGON-FC SOY RSS耐晒黄  
福龙 DRAGON-FC SOY RSS M.Y 中黄  
福龙 DRAGON-FC SOY RSS MAGENTA 红  
福龙 DRAGON-FC SOY RSS CYAN 蓝  
福龙 DRAGON-FC SOY RSS BLACK 黑  
福龙 DRAGON-FC SOY ND YELLOW 黄  
福龙 DRAGON-FC SOY ND耐晒黄  
福龙 DRAGON-FC SOY ND M.Y 中黄  
福龙 DRAGON-FC SOY ND MAGENTA 红  
福龙 DRAGON-FC SOY ND CYAN 蓝  
福龙 DRAGON-FC SOY ND BLACK 黑  
福龙 DRAGON-FC SOY耐晒黄 ( NW )  
福龙 DRAGON-FC SOY MAGENTA 红 ( NW )  
福龙 DRAGON-FC SOY CYAN 蓝 ( NW )  
福龙 DRAGON-FC SOY BLACK 黑 ( NW )  
福龙 XHY 黑  
福龙 XHY 蓝  
福龙 XHY 红  
福龙 XHY 黄  
福龙 YT 黑  
福龙 YT 蓝  
福龙 YT 红  
福龙 YT 黄  
新宝龙 DRAGON-FC YELLOW黄



Unless otherwise agreed in writing, this document is issued by the Company subject to its General Conditions of Service printed overleaf, available on request or accessible at <http://www.sgs.com/en/Terms-and-Conditions.aspx> and, for electronic format documents, subject to Terms and Conditions for Electronic Documents at <http://www.sgs.com/en/Terms-and-Conditions/Terms-e-Document.aspx>. Attention is drawn to the limitation of liability, indemnification and jurisdiction issues defined therein. Any holder of this document is advised that information contained hereon reflects the Company's findings at the time of its intervention only and within the limits of Client's instructions, if any. The Company's sole responsibility is to its Client and this document does not exonerate parties to a transaction from exercising all their rights and obligations under the transaction documents. This document cannot be reproduced except in full, without prior written approval of the Company. Any unauthorized alteration, forgery or falsification of the content or appearance of this document is unlawful and offenders may be prosecuted to the fullest extent of the law. Unless otherwise stated the results shown in this test report refer only to the sample(s) tested.

Attention: To check the authenticity of testing/inspection report & certificate, please contact us at telephone: (86-755) 8307 1443, or email: [CN.Doccheck@sgs.com](mailto:CN.Doccheck@sgs.com)

SGS-CSI Standards Technical Services Co., Ltd.  
Guangzhou Branch, Inspection & Testing Services

198 Kezhu Road, Sciencetech Park Guangzhou Economic & Technology Development District, Guangzhou, China 510663  
中国·广州·经济技术开发区科学城科珠路198号 邮编: 510663

t (86-20) 82155555 www.sgsgroup.com.cn  
t (86-20) 82155555 sgs.china@sgs.com

## Test Report

No. CANEC2100856701

Date: 20 Jan 2021

Page 6 of 32

新宝龙DRAGON-FC MAGENTA 红  
新宝龙DRAGON-FC CYAN 蓝  
新宝龙DRAGON-FC BLACK 黑  
湧水 WAKIMIZU SZ YELLOW 黄  
湧水 WAKIMIZU SZ MAGENTA 红  
湧水 WAKIMIZU SZ CYAN 蓝  
湧水 WAKIMIZU SZ BLACK 黑  
DIAMOND SZ YELLOW 黄  
DIAMOND SZ HF 黄  
DIAMOND SZ MAGENTA 红  
DIAMOND SZ CYAN 蓝  
DIAMOND SZ BLACK 黑  
DIAMOND RR YELLOW 黄  
DIAMOND RR HF 黄  
DIAMOND RR MAGENTA 红  
DIAMOND RR CYAN 蓝  
DIAMOND RR BLACK 黑  
宝麟UNICORN YELLOW 黄  
宝麟UNICORN MAGENTA 红  
宝麟UNICORN CYAN 蓝  
宝麟UNICORN BLACK 黑  
宝麟ON UNICORN ON YELLOW 黄  
宝麟ON UNICORN ON MAGENTA 红  
宝麟ON UNICORN ON CYAN 蓝  
宝麟ON UNICORN ON BLACK 黑  
宝麟ON UNICORN ON YELLOW NO.2 黄  
宝麟ON UNICORN ON MAGENTA NO.2 红  
宝麟ON UNICORN ON CYAN NO.2 蓝  
宝麟ON UNICORN ON BLACK NO.2 黑  
新宝虎 NEW TIGER YELLOW 黄  
新宝虎 NEW TIGER YELLOW NO.2 黄  
新宝虎 NEW TIGER YELLOW NO.3 黄  
新宝虎 NEW TIGER MAGENTA 红  
新宝虎 NEW TIGER CYAN 蓝  
新宝虎 NEW TIGER BLACK 黑  
新宝虎 QS NEW TIGER QS YELLOW 黄  
新宝虎 QS NEW TIGER QS YELLOW NO.2 黄  
新宝虎 QS NEW TIGER QS MAGENTA 红  
新宝虎 QS NEW TIGER QS CYAN 蓝  
新宝虎 QS NEW TIGER QS BLACK 黑  
新宝虎 BS NEW TIGER BS YELLOW 黄  
新宝虎 BS NEW TIGER BS YELLOW NO.2 黄  
新宝虎 BS NEW TIGER BS MAGENTA 红



Unless otherwise agreed in writing, this document is issued by the Company subject to its General Conditions of Service printed overleaf, available on request or accessible at <http://www.sgs.com/en/Terms-and-Conditions.aspx> and, for electronic format documents, subject to Terms and Conditions for Electronic Documents at <http://www.sgs.com/en/Terms-and-Conditions/Terms-e-Document.aspx>. Attention is drawn to the limitation of liability, indemnification and jurisdiction issues defined therein. Any holder of this document is advised that information contained hereon reflects the Company's findings at the time of its intervention only and within the limits of Client's instructions, if any. The Company's sole responsibility is to its Client and this document does not exonerate parties to a transaction from exercising all their rights and obligations under the transaction documents. This document cannot be reproduced except in full, without prior written approval of the Company. Any unauthorized alteration, forgery or falsification of the content or appearance of this document is unlawful and offenders may be prosecuted to the fullest extent of the law. Unless otherwise stated the results shown in this test report refer only to the sample(s) tested.

Attention: To check the authenticity of testing/inspection report & certificate, please contact us at telephone: (86-755) 8307 1443, or email: [CN.Doccheck@sgs.com](mailto:CN.Doccheck@sgs.com)

SGS-CSI Standards Technical Services Co., Ltd.  
Guangzhou Branch, Inspection & Testing Services

198 Kezhu Road, Sci-Tech Park Guangzhou Economic & Technology Development District, Guangzhou, China 510663  
中国·广州·经济技术开发区科学城科珠路198号 邮编: 510663

t (86-20) 82155555 www.sgsgroup.com.cn  
t (86-20) 82155555 sgs.china@sgs.com

## Test Report

No. CANEC2100856701

Date: 20 Jan 2021

Page 7 of 32

新宝虎 BS NEW TIGER BS CYAN 蓝  
新宝虎 BS NEW TIGER BS BLACK 黑  
新宝虎 New Tiger黄-H  
新宝虎 New Tiger红-H  
新宝虎 New Tiger蓝-H  
新宝虎 New Tiger黑-H  
新宝虎 NEW TIGER STAR YELLOW 黄  
新宝虎 NEW TIGER STAR MAGENTA 红  
新宝虎 NEW TIGER STAR CYAN 蓝  
新宝虎 NEW TIGER STAR BLACK 黑  
新宝凤 PHOENIX YELLOW 黄  
新宝凤 PHOENIX MAGENTA 红  
新宝凤 PHOENIX CYAN 蓝  
新宝凤 PHOENIX BLACK 黑  
新宝凤 PHOENIX QS YELLOW 黄  
新宝凤 PHOENIX QS MAGENTA 红  
新宝凤 PHOENIX QS CYAN 蓝  
新宝凤 PHOENIX QS BLACK 黑  
新宝凤 PHOENIX SOY YELLOW 黄  
新宝凤 PHOENIX SOY YELLOW 中黄  
新宝凤 PHOENIX SOY YELLOW NO.2黄  
新宝凤 PHOENIX SOY MAGENTA 红  
新宝凤 PHOENIX SOY CYAN 蓝  
新宝凤 PHOENIX SOY BLACK 黑  
新宝凤 SOY ON PHOENIX SOY ON YELLOW 黄  
新宝凤 SOY ON PHOENIX SOY ON YELLOW NO.2黄  
新宝凤 SOY ON PHOENIX SOY ON YELLOW NO.3黄  
新宝凤 SOY ON PHOENIX SOY ON MAGENTA 红  
新宝凤 SOY ON PHOENIX SOY ON CYAN 蓝  
新宝凤 SOY ON PHOENIX SOY ON BLACK 黑  
新宝凤 SOY HD ON PHOENIX SOY HD ON YELLOW 黄  
新宝凤 SOY HD ON PHOENIX SOY HD ON MAGENTA 红  
新宝凤 SOY HD ON PHOENIX SOY HD ON CYAN 蓝  
新宝凤 SOY HD ON PHOENIX SOY HD ON BLACK 黑  
宝鹏 CYGNUS YELLOW 黄  
宝鹏 CYGNUS MAGENTA 红  
宝鹏 CYGNUS CYAN 蓝  
宝鹏 CYGNUS BLACK 黑  
宝鹏 ON CYGNUS ON YELLOW 黄  
宝鹏 ON CYGNUS ON YELLOW 中黄  
宝鹏 ON CYGNUS ON YELLOW NO.2黄  
宝鹏 ON CYGNUS ON MAGENTA 红  
宝鹏 ON CYGNUS ON MAGENTA NO.2红



Unless otherwise agreed in writing, this document is issued by the Company subject to its General Conditions of Service printed overleaf, available on request or accessible at <http://www.sgs.com/en/Terms-and-Conditions.aspx> and, for electronic format documents, subject to Terms and Conditions for Electronic Documents at <http://www.sgs.com/en/Terms-and-Conditions/Terms-e-Document.aspx>. Attention is drawn to the limitation of liability, indemnification and jurisdiction issues defined therein. Any holder of this document is advised that information contained hereon reflects the Company's findings at the time of its intervention only and within the limits of Client's instructions, if any. The Company's sole responsibility is to its Client and this document does not exonerate parties to a transaction from exercising all their rights and obligations under the transaction documents. This document cannot be reproduced except in full, without prior written approval of the Company. Any unauthorized alteration, forgery or falsification of the content or appearance of this document is unlawful and offenders may be prosecuted to the fullest extent of the law. Unless otherwise stated the results shown in this test report refer only to the sample(s) tested.

Attention: To check the authenticity of testing/inspection report & certificate, please contact us at telephone: (86-755) 8307 1443, or email: [CN.Doccheck@sgs.com](mailto:CN.Doccheck@sgs.com)



## Test Report

No. CANEC2100856701

Date: 20 Jan 2021

Page 8 of 32

宝鹏ON CYGNUS ON CYAN 蓝  
宝鹏ON CYGNUS ON BLACK 黑  
宝鹏RR CYGNUS RR YELLOW 黄  
宝鹏RR CYGNUS RR YELLOW NO.2黄  
宝鹏RR CYGNUS RR MAGENTA 红  
宝鹏RR CYGNUS RR MAGENTA NO.2红  
宝鹏RR CYGNUS RR CYAN 蓝  
宝鹏RR CYGNUS RR BLACK 黑  
Cygnus ON 宝鹏 ON Black 黑-H  
Cygnus RR 宝鹏 RR Black 黑-H  
New Pegasus 新飞马 黑  
New Pegasus 新飞马 蓝  
New Pegasus 新飞马 红  
New Pegasus 新飞马 黄  
New Pegasus 新飞马 黑 S  
New Pegasus 新飞马 蓝 S  
New Pegasus 新飞马 红 S  
New Pegasus 新飞马 黄 S  
New Pegasus 新飞马 黑-H  
New Pegasus 新飞马 蓝-H  
New Pegasus 新飞马 红-H  
New Pegasus 新飞马 黄-H  
New Pegasus 新飞马 No.2 黑  
New Pegasus 新飞马 No.2 蓝  
New Pegasus 新飞马 No.2 红  
New Pegasus 新飞马 No.2 黄  
New Pegasus 新飞马 No.2 黑-H  
New Pegasus 新飞马 No.2 蓝-H  
New Pegasus 新飞马 No.2 红-H  
New Pegasus 新飞马 No.2 黄-H  
New Pegasus 新飞马 No.2 黑 S  
New Pegasus 新飞马 No.2 蓝 S  
New Pegasus 新飞马 No.2 红 S  
New Pegasus 新飞马 No.2 黄 S  
New Pegasus 新飞马 No.3 黄  
New Pegasus 新飞马 No.3 黄-H  
New Pegasus 新飞马 No.4 黄  
New Pegasus 新飞马 No.5 黄  
New Pegasus 新飞马 No.3 红  
New Pegasus 新飞马 No.3 蓝  
New Pegasus 新飞马 红相黄(内袋)  
宝星Stars YELLOW 黄  
宝星Stars MAGENTA 红



Unless otherwise agreed in writing, this document is issued by the Company subject to its General Conditions of Service printed overleaf, available on request or accessible at <http://www.sgs.com/en/Terms-and-Conditions.aspx> and, for electronic format documents, subject to Terms and Conditions for Electronic Documents at <http://www.sgs.com/en/Terms-and-Conditions/Terms-e-Document.aspx>. Attention is drawn to the limitation of liability, indemnification and jurisdiction issues defined therein. Any holder of this document is advised that information contained hereon reflects the Company's findings at the time of its intervention only and within the limits of Client's instructions, if any. The Company's sole responsibility is to its Client and this document does not exonerate parties to a transaction from exercising all their rights and obligations under the transaction documents. This document cannot be reproduced except in full, without prior written approval of the Company. Any unauthorized alteration, forgery or falsification of the content or appearance of this document is unlawful and offenders may be prosecuted to the fullest extent of the law. Unless otherwise stated the results shown in this test report refer only to the sample(s) tested.

Attention: To check the authenticity of testing/inspection report & certificate, please contact us at telephone: (86-755) 8307 1443, or email: [CN.Doccheck@sgs.com](mailto:CN.Doccheck@sgs.com)



## Test Report

No. CANEC2100856701

Date: 20 Jan 2021

Page 9 of 32

宝星Stars CYAN 蓝  
宝星Stars BLACK 黑  
宝星Stars-H YELLOW 黄-H  
宝星Stars-H MAGENTA 红-H  
宝星Stars-H CYAN 蓝-H  
宝星Stars-H BLACK 黑-H  
宝星Stars ON YELLOW 黄  
宝星Stars ON MAGENTA 红  
宝星Stars ON CYAN 蓝  
宝星Stars ON BLACK 黑  
宝星Stars RR YELLOW 黄  
宝星Stars RR MAGENTA 红  
宝星Stars RR CYAN 蓝  
宝星Stars RR BLACK 黑  
宝莹 黄  
宝莹 红  
宝莹 蓝  
宝莹 黑  
NCP NW PROCESS BLACK 黑  
NCP NW PROCESS CYAN 蓝  
NCP NW PROCESS MAGENTA 红  
NCP NW FG 28 BRONZE RED 金红  
NCP NW PROCESS YELLOW 黄  
美鲸 黑  
美鲸 蓝  
美鲸 红  
美鲸 黄  
POP 黄  
POP 红  
POP 蓝  
POP 黑  
POP BRONZE RED 金光红  
POP 大红  
POP 桃红  
POP W白  
POP 超耐晒红  
POP 超耐晒黄  
POP 光油  
POP 哑油  
POP RR黄  
POP RR红  
POP RR蓝  
POP RR黑



Unless otherwise agreed in writing, this document is issued by the Company subject to its General Conditions of Service printed overleaf, available on request or accessible at <http://www.sgs.com/en/Terms-and-Conditions.aspx> and, for electronic format documents, subject to Terms and Conditions for Electronic Documents at <http://www.sgs.com/en/Terms-and-Conditions/Terms-e-Document.aspx>. Attention is drawn to the limitation of liability, indemnification and jurisdiction issues defined therein. Any holder of this document is advised that information contained hereon reflects the Company's findings at the time of its intervention only and within the limits of Client's instructions, if any. The Company's sole responsibility is to its Client and this document does not exonerate parties to a transaction from exercising all their rights and obligations under the transaction documents. This document cannot be reproduced except in full, without prior written approval of the Company. Any unauthorized alteration, forgery or falsification of the content or appearance of this document is unlawful and offenders may be prosecuted to the fullest extent of the law. Unless otherwise stated the results shown in this test report refer only to the sample(s) tested.

Attention: To check the authenticity of testing/inspection report & certificate, please contact us at telephone: (86-755) 8307 1443, or email: [CN.Doccheck@sgs.com](mailto:CN.Doccheck@sgs.com)

SGS-CSI Standards Technical Services Co., Ltd.  
Guangzhou Branch, Inspection & Testing Services

198 Kezhu Road, Sciencetech Park Guangzhou Economic & Technology Development District, Guangzhou, China 510663  
中国·广州·经济技术开发区科学城科珠路198号 邮编: 510663

t (86-20) 82155555 www.sgs.com.cn  
t (86-20) 82155555 sgs.china@sgs.com

## Test Report

No. CANEC2100856701

Date: 20 Jan 2021

Page 10 of 32

POP E\_型 黄  
POP E\_型 红  
POP E\_型 蓝  
POP E\_型 黑  
POP E-型 NO.2 白  
POP E-型 No.3 黑  
POP E-型 No.2 黑  
POP E-型 No.2 蓝  
POP NO.2 红  
POP L-型 黄  
POP L-型 红  
POP L-型 蓝  
POP L-型 黑  
POP L-型 白  
FG 14 MAGENTA 红  
FG 23 MEDIUM RED 中红  
FG 27 金赤  
FG 31 ORANGE 橙  
FG 28 BRONZE RED 金红  
FG 42 赤黄  
FG 48 MEDIUM Y 中黄  
FG 51 GREEN 草绿  
FG 60 BRONZE BLUE 紺蓝  
FG 62 BRONZE BLUE 紺蓝  
FG 65 ULTRAMARINE BLUE 群青  
FG 68 紫  
FG 72 牡丹红  
FG 75 玫瑰红  
FG 179 WHITE 白  
EG 天蓝  
EG 射光蓝  
EG 孔雀蓝  
EG 绿  
EG 大红  
EG 品红  
EG 橙  
EG 金红  
大鹏 金红  
EG 紫  
EG 白  
EG 中黄  
EG调墨油  
EG透明黄

Unless otherwise agreed in writing, this document is issued by the Company subject to its General Conditions of Service printed overleaf, available on request or accessible at <http://www.sgs.com/en/Terms-and-Conditions.aspx> and, for electronic format documents, subject to Terms and Conditions for Electronic Documents at <http://www.sgs.com/en/Terms-and-Conditions/Terms-e-Document.aspx>. Attention is drawn to the limitation of liability, indemnification and jurisdiction issues defined therein. Any holder of this document is advised that information contained hereon reflects the Company's findings at the time of its intervention only and within the limits of Client's instructions, if any. The Company's sole responsibility is to its Client and this document does not exonerate parties to a transaction from exercising all their rights and obligations under the transaction documents. This document cannot be reproduced except in full, without prior written approval of the Company. Any unauthorized alteration, forgery or falsification of the content or appearance of this document is unlawful and offenders may be prosecuted to the fullest extent of the law. Unless otherwise stated the results shown in this test report refer only to the sample(s) tested.

Attention: To check the authenticity of testing/inspection report & certificate, please contact us at telephone: (86-755) 8307 1443, or email: [CN.Doccheck@sgs.com](mailto:CN.Doccheck@sgs.com)



SGS-CSTC Standards Technical Services Co., Ltd.  
Guangzhou Branch, Inspection & Testing Services

198 Kexhu Road, Sciencetech Park Guangzhou Economic & Technology Development District, Guangzhou, China 510663  
中国·广州·经济技术开发区科学城科珠路198号 邮编: 510663

t (86-20) 82155555 www.sgsgroup.com.cn  
t (86-20) 82155555 sgs.china@sgs.com

## Test Report

No. CANEC2100856701

Date: 20 Jan 2021

Page 11 of 32

BG 紫  
BG 紫红  
BG 桃红  
BG 耐晒金红  
BG 耐晒黄  
BG 橙  
BG 中黄  
BG 天蓝  
BG 洋红  
BG 深黄  
BG 大红  
BG 深蓝  
BG 射光蓝  
BG 黑  
BG 蓝  
BG 绿  
BG 红  
BG MEDIUM 调墨油  
BG 金红  
BG WHITE 白  
BG 黄  
HU 紫  
HU 紫红  
HU 桃红  
HU 耐晒金红  
HU 耐晒黄  
HU 橙  
HU 中黄  
HU 天蓝  
HU 洋红  
HU 深黄  
HU 大红  
HU 深蓝  
HU 射光蓝  
HU 黑  
HU 蓝  
HU 绿  
HU 红  
HU MEDIUM 调墨油  
HU 金红  
HU WHITE 白  
HU 黄  
HG BLACK 黑



Unless otherwise agreed in writing, this document is issued by the Company subject to its General Conditions of Service printed overleaf, available on request or accessible at <http://www.sgs.com/en/Terms-and-Conditions.aspx> and, for electronic format documents, subject to Terms and Conditions for Electronic Documents at <http://www.sgs.com/en/Terms-and-Conditions/Terms-e-Document.aspx>. Attention is drawn to the limitation of liability, indemnification and jurisdiction issues defined therein. Any holder of this document is advised that information contained hereon reflects the Company's findings at the time of its intervention only and within the limits of Client's instructions, if any. The Company's sole responsibility is to its Client and this document does not exonerate parties to a transaction from exercising all their rights and obligations under the transaction documents. This document cannot be reproduced except in full, without prior written approval of the Company. Any unauthorized alteration, forgery or falsification of the content or appearance of this document is unlawful and offenders may be prosecuted to the fullest extent of the law. Unless otherwise stated the results shown in this test report refer only to the sample(s) tested.

Attention: To check the authenticity of testing/inspection report & certificate, please contact us at telephone: (86-755) 8307 1443, or email: [CN.Doccheck@sgs.com](mailto:CN.Doccheck@sgs.com)

SGS-CSI Standards Technical Services Co., Ltd.  
Guangzhou Branch / 广州分公司 检测实验室

198 Kezhu Road, Science Park Guangzhou Economic & Technology Development District, Guangzhou, China 510663  
中国·广州·经济技术开发区科学城科珠路198号 邮编: 510663

t (86-20) 82155555 www.sgsgroup.com.cn  
t (86-20) 82155555 sgs.china@sgs.com

## Test Report

No. CANEC2100856701

Date: 20 Jan 2021

Page 12 of 32

HG CYAN 蓝  
HG MAGENTA 红  
HG YELLOW 黄  
SOY Reflex Blue 射光蓝  
SOY Ultramarine Blue(FG65)群青  
SOY SILVER 银  
SOY RICH GOLD 青金  
SOY Green 绿  
SOY Green(FG51)草绿  
SOY Rose ( FG75 ) 玫瑰红  
SOY L.F Magenta 耐晒红  
SOY S.L.F Magenta 超耐晒红  
SOY L.F Red 耐晒大红  
SOY Orange ( FG31 ) 橙  
SOY 131 Orange 橙  
SOY L.F Orange 耐晒橙  
SOY Warm Red(FG28)金红  
SOY 2834 Scarlet 金红  
SOY L.F Warm Red 耐晒金红  
SOY S.L.F Warm Red 超耐晒金红  
SOY 165 Violet 紫  
SOY 167 Violet 紫  
SOY PURPLE 紫红  
SOY Special White 特白  
SOY Special White RSS 特白  
SOY 2539 YELLOW 黄  
SOY L.F Yellow 耐晒黄  
SOY S.L.F Yellow 超耐晒黄  
115 红 SOY BASE  
117 桃红 SOY BASE  
耐晒红  
超耐晒红  
耐晒大红  
耐晒橙  
耐晒金红  
超耐晒金红  
耐晒黄  
超耐晒黄  
GD OP VARNISH 光油  
GD \*2 OP VARNISH 光油  
GD \*3光油  
GD \*4光油  
GD \*5-2光油



Unless otherwise agreed in writing, this document is issued by the Company subject to its General Conditions of Service printed overleaf, available on request or accessible at <http://www.sgs.com/en/Terms-and-Conditions.aspx> and, for electronic format documents, subject to Terms and Conditions for Electronic Documents at <http://www.sgs.com/en/Terms-and-Conditions/Terms-e-Document.aspx>. Attention is drawn to the limitation of liability, indemnification and jurisdiction issues defined therein. Any holder of this document is advised that information contained hereon reflects the Company's findings at the time of its intervention only and within the limits of Client's instructions, if any. The Company's sole responsibility is to its Client and this document does not exonerate parties to a transaction from exercising all their rights and obligations under the transaction documents. This document cannot be reproduced except in full, without prior written approval of the Company. Any unauthorized alteration, forgery or falsification of the content or appearance of this document is unlawful and offenders may be prosecuted to the fullest extent of the law. Unless otherwise stated the results shown in this test report refer only to the sample(s) tested.

Attention: To check the authenticity of testing/inspection report & certificate, please contact us at telephone: (86-755) 8307 1443, or email: [CN.Doccheck@sgs.com](mailto:CN.Doccheck@sgs.com)

SGS-CSI Standards Technical Services Co., Ltd.  
Guangzhou Branch Inspection & Testing Laboratory

198 Kezhu Road, Science Park Guangzhou Economic & Technology Development District, Guangzhou, China 510663  
中国·广州·经济技术开发区科学城科珠路198号 邮编: 510663

t (86-20) 82155555 www.sgsgroup.com.cn  
t (86-20) 82155555 sgs.china@sgs.com



## Test Report

No. CANEC2100856701

Date: 20 Jan 2021

Page 13 of 32

GD.OP VARNISH 6# 光油  
GD \*7 OP光油  
GD \*8光油  
GD\*9光油  
GD #10 HG 光油  
GW OP VARNISH 光油  
GW 联机无蜡光油  
消光剂  
R-R MATT OP \*2 耐磨消光  
NCP FG MATT VARNISH 消光剂  
MATT OP #3耐磨消光油  
MATT OP #4消光油  
MATT OP #5消光油  
MATT OP #6 消光油  
PINK MAGENTA 桃红  
BIG MAGENTA 大红  
NCP SPECIAL BLACK 特黑  
NCP C. GREEN 绿  
NCP D.RICH GOLD 青金  
NCP D.PALE GOLD 赤金  
NCP D. SILVER 1100  
NCP D. SILVER 银  
NCP D.WHITE 白  
NCP D.S WHITE 白  
NCP D.SPECIAL WHITE 特白  
NCP D. PUPPLE 紫红  
NCP D. FG MEDIUM 调墨油  
100E RICH GOLD 青金  
100E PALE GOLD 赤金  
100E SILVER 银  
A33 REFLEX BLUE C 射光蓝  
A38 射光蓝  
CH 112K 红  
CH 113K 赤  
CH 115K 红  
CH 117K 桃红  
CH 120R 红  
CH 131O 橙  
CH 134O 耐性橙  
CH 140Y 黄  
CH 148Y 黄  
CH 152G 绿  
CH 165V 紫



Unless otherwise agreed in writing, this document is issued by the Company subject to its General Conditions of Service printed overleaf, available on request or accessible at <http://www.sgs.com/en/Terms-and-Conditions.aspx> and, for electronic format documents, subject to Terms and Conditions for Electronic Documents at <http://www.sgs.com/en/Terms-and-Conditions/Terms-e-Document.aspx>. Attention is drawn to the limitation of liability, indemnification and jurisdiction issues defined therein. Any holder of this document is advised that information contained hereon reflects the Company's findings at the time of its intervention only and within the limits of Client's instructions, if any. The Company's sole responsibility is to its Client and this document does not exonerate parties to a transaction from exercising all their rights and obligations under the transaction documents. This document cannot be reproduced except in full, without prior written approval of the Company. Any unauthorized alteration, forgery or falsification of the content or appearance of this document is unlawful and offenders may be prosecuted to the fullest extent of the law. Unless otherwise stated the results shown in this test report refer only to the sample(s) tested.

Attention: To check the authenticity of testing/inspection report & certificate, please contact us at telephone: (86-755) 8307 1443, or email: [CN.Doccheck@sgs.com](mailto:CN.Doccheck@sgs.com)

SGS-CSI Standards Technical Services Co., Ltd.  
Guangzhou Branch Inspection & Testing Laboratory

198 Kezhu Road, Science Park Guangzhou Economic & Technology Development District, Guangzhou, China 510663  
中国·广州·经济技术开发区科学城科珠路198号 邮编: 510663

t (86-20) 82155555 www.sgs.com.cn  
t (86-20) 82155555 sgs.china@sgs.com

## Test Report

No. CANEC2100856701

Date: 20 Jan 2021

Page 14 of 32

CH 167V 紫  
CH 185B 黑  
DIAMOND SZ 141Y BASE 黄  
DIAMOND SZ 142Y BASE 黄  
DIAMOND SZ 143Y BASE 黄  
DIAMOND SZ 147Y BASE 黄  
DIAMOND SZ 114K BASE 红  
DIAMOND SZ 125R BASE 金红  
DIAMOND SZ 129R BASE 金红  
DIAMOND SZ 131O BASE 橙  
DIAMOND SZ 134O BASE 橙  
DIAMOND SZ 157C BASE 蓝  
DIAMOND SZ 158C BASE 蓝  
DIAMOND SZ 185B BASE 黑  
DIAMOND SZ 168V BASE 紫  
DIAMOND SZ 112K BASE 红  
DIAMOND SZ 126R BASE 红  
K05 PROCESS M 红  
Y32耐晒黄  
Y72 PC PROCESS 黄  
R74 红  
R251耐晒金红  
134 耐性橙  
SUN 05-24 中黄  
SUN 05-14 洋红  
SUN 05-32 天兰  
SUN 05-52 黑  
SUN 05-03 金红  
SUN 05-06 大红  
SUN 05-40 白  
SUN 05-60 绿  
SUN 05-29 桔黄  
SUN 05-27 深黄  
SUN 05-37 深蓝  
SUN 05-90 亮光浆  
SUN 05-92 去粘剂  
SUN 05-93 冲淡剂  
SUN 05-94 耐磨光油  
SUN 05-71 青莲  
SUN 05-15 桃红  
SUN 05-24A 中黄  
SUN 05-39 射光蓝  
SUN 05-30 孔雀蓝



Unless otherwise agreed in writing, this document is issued by the Company subject to its General Conditions of Service printed overleaf, available on request or accessible at <http://www.sgs.com/en/Terms-and-Conditions.aspx> and, for electronic format documents, subject to Terms and Conditions for Electronic Documents at <http://www.sgs.com/en/Terms-and-Conditions/Terms-e-Document.aspx>. Attention is drawn to the limitation of liability, indemnification and jurisdiction issues defined therein. Any holder of this document is advised that information contained hereon reflects the Company's findings at the time of its intervention only and within the limits of Client's instructions, if any. The Company's sole responsibility is to its Client and this document does not exonerate parties to a transaction from exercising all their rights and obligations under the transaction documents. This document cannot be reproduced except in full, without prior written approval of the Company. Any unauthorized alteration, forgery or falsification of the content or appearance of this document is unlawful and offenders may be prosecuted to the fullest extent of the law. Unless otherwise stated the results shown in this test report refer only to the sample(s) tested.

Attention: To check the authenticity of testing/inspection report & certificate, please contact us at telephone: (86-755) 8307 1443, or email: [CN.Doccheck@sgs.com](mailto:CN.Doccheck@sgs.com)

SGS-CSI Standards Technical Services Co., Ltd.  
Guangzhou Branch / 广州分公司

198 Kezhu Road, Science Park Guangzhou Economic & Technology Development District, Guangzhou, China 510663  
中国·广州·经济技术开发区科学城科珠路198号 邮编: 510663

t (86-20) 82155555 www.sgsgroup.com.cn  
t (86-20) 82155555 sgs.china@sgs.com

## Test Report

No. CANEC2100856701

Date: 20 Jan 2021

Page 15 of 32

SUN 05-18 玫瑰红  
SUN 90-83 银墨  
SUN 94-90 青金墨  
PHOENIX 05 宝凤 05-52黑  
PHOENIX 05 宝凤 05-32 天蓝  
PHOENIX 05 宝凤 05-37 深蓝  
PHOENIX 90 宝凤 90-83 银墨  
PHOENIX 94 宝凤 94-90 青金墨  
PHOENIX 05 宝凤 05-60 绿  
PHOENIX 05 宝凤 05-14 洋红  
PHOENIX 05 宝凤 05-06 大红  
PHOENIX 05 宝凤 05-90 亮光浆  
PHOENIX 05 宝凤 05-94 耐磨光油  
PHOENIX 05 宝凤 05-93 冲淡剂  
PHOENIX 05 宝凤 05-92 去粘剂  
PHOENIX 05 宝凤 05-29 桔黄  
PHOENIX 05 宝凤 05-03 金红  
PHOENIX 05 宝凤 05-40 白  
PHOENIX 05 宝凤 05-24 中黄  
PHOENIX 05 宝凤 05-24A 中黄  
PHOENIX 05 宝凤 05-24B 中黄  
PHOENIX 05 宝凤 05-27 深黄  
PHOENIX 05 宝凤 05-71 青莲  
PHOENIX 05 宝凤 05-15 桃红  
PHOENIX 05 宝凤 05-39 射光蓝  
PHOENIX 05 宝凤 05-30 孔雀蓝  
PHOENIX 05 宝凤 05-18 玫瑰红  
DSK SZ 580 BLUE 荧光蓝  
DSK SZ 510 GREEN 荧光绿  
DSK SZ 710 MAGENTA 荧光品红  
DSK SZ 400 ORANGE 荧光橙  
DSK SZ 720 PINK 荧光粉红  
DSK SZ 760 PINK 荧光粉红  
DSK SZ 300 RED 荧光红  
DSK SZ 280 RED 荧光红  
DSK SZ 480 YELLOW 荧光黄  
DSK SZ 450 YELLOW 荧光深黄  
Cygnus NV 宝鹏 NV Black 黑  
Cygnus NV 宝鹏 NV Cyan 蓝  
Cygnus NV 宝鹏 NV Magenta 红  
Cygnus NV 宝鹏 NV Yellow 黄  
Cygnus JH ON 黑  
Cygnus JH ON 蓝



Unless otherwise agreed in writing, this document is issued by the Company subject to its General Conditions of Service printed overleaf, available on request or accessible at <http://www.sgs.com/en/Terms-and-Conditions.aspx> and, for electronic format documents, subject to Terms and Conditions for Electronic Documents at <http://www.sgs.com/en/Terms-and-Conditions/Terms-e-Documents.aspx>. Attention is drawn to the limitation of liability, indemnification and jurisdiction issues defined therein. Any holder of this document is advised that information contained hereon reflects the Company's findings at the time of its intervention only and within the limits of Client's instructions, if any. The Company's sole responsibility is to its Client and this document does not exonerate parties to a transaction from exercising all their rights and obligations under the transaction documents. This document cannot be reproduced except in full, without prior written approval of the Company. Any unauthorized alteration, forgery or falsification of the content or appearance of this document is unlawful and offenders may be prosecuted to the fullest extent of the law. Unless otherwise stated the results shown in this test report refer only to the sample(s) tested.

Attention: To check the authenticity of testing/inspection report & certificate, please contact us at telephone: (86-755) 8307 1443, or email: [CN.Doccheck@sgs.com](mailto:CN.Doccheck@sgs.com)

## Test Report

No. CANEC2100856701

Date: 20 Jan 2021

Page 16 of 32

Cygnus JH ON 红  
Cygnus JH ON 黄  
DRAGON-FC SOY NV 福龙 NV BLACK 黑  
DRAGON-FC SOY NV 福龙 NV CYAN 蓝  
DRAGON-FC SOY NV 福龙 NV MAGENTA 红  
DRAGON-FC SOY NV 福龙 NV YELLOW 黄  
MATT BLACK 哑光黑  
MATT CYAN 哑光蓝  
MATT MAGENTA 哑光红  
MATT YELLOW 哑光黄  
蓝龙 Black 黑  
蓝龙 Cyan 蓝  
蓝龙 Magenta 红  
蓝龙 Yellow 黄  
蓝鹏 Black 黑  
蓝鹏 Cyan 蓝  
蓝鹏 Magenta 红  
蓝鹏 Yellow 黄  
蓝凤 Black 黑  
蓝凤 Cyan 蓝  
蓝凤 Magenta 红  
蓝凤 Yellow 黄  
蓝马 Black 黑  
蓝马 Cyan 蓝  
蓝马 Magenta 红  
蓝马 Yellow 黄  
蓝钻 黑  
蓝钻 蓝  
蓝钻 红  
蓝钻 黄  
大道网专供1号 黄  
大道网专供1号 红  
大道网专供1号 蓝  
大道网专供1号 黑  
大道网专供2号 黄  
大道网专供2号 红  
大道网专供2号 蓝  
大道网专供2号 黑  
飓风经济型胶印油墨 中黄  
飓风经济型胶印油墨 黄色  
飓风经济型胶印油墨 红色  
飓风经济型胶印油墨 蓝色  
飓风经济型胶印油墨 黑色



Unless otherwise agreed in writing, this document is issued by the Company subject to its General Conditions of Service printed overleaf, available on request or accessible at <http://www.sgs.com/en/Terms-and-Conditions.aspx> and, for electronic format documents, subject to Terms and Conditions for Electronic Documents at <http://www.sgs.com/en/Terms-and-Conditions/Terms-e-Document.aspx>. Attention is drawn to the limitation of liability, indemnification and jurisdiction issues defined therein. Any holder of this document is advised that information contained hereon reflects the Company's findings at the time of its intervention only and within the limits of Client's instructions, if any. The Company's sole responsibility is to its Client and this document does not exonerate parties to a transaction from exercising all their rights and obligations under the transaction documents. This document cannot be reproduced except in full, without prior written approval of the Company. Any unauthorized alteration, forgery or falsification of the content or appearance of this document is unlawful and offenders may be prosecuted to the fullest extent of the law. Unless otherwise stated the results shown in this test report refer only to the sample(s) tested.

Attention: To check the authenticity of testing/inspection report & certificate, please contact us at telephone: (86-755) 8307 1443, or email: [CN.Doccheck@sgs.com](mailto:CN.Doccheck@sgs.com)



## Test Report

No. CANEC2100856701

Date: 20 Jan 2021

Page 17 of 32

飓风经济型胶印油墨 中黄-H  
飓风经济型胶印油墨 黄色-H  
飓风经济型胶印油墨 红色-H  
飓风经济型胶印油墨 蓝色-H  
飓风经济型胶印油墨 黑色-H  
飓风亮光快干胶印油墨 中黄  
飓风亮光快干胶印油墨 黄色  
飓风亮光快干胶印油墨 红色  
飓风亮光快干胶印油墨 蓝色  
飓风亮光快干胶印油墨 黑色  
飓风快干高光不结皮胶印油墨 中黄  
飓风快干高光不结皮胶印油墨 黄色  
飓风快干高光不结皮胶印油墨 红色  
飓风快干高光不结皮胶印油墨 蓝色  
飓风快干高光不结皮胶印油墨 黑色  
Druckmeister RUBY 中黄  
Druckmeister RUBY 黄色  
Druckmeister RUBY 红色  
Druckmeister RUBY 蓝色  
Druckmeister RUBY 黑色  
Druckmeister SAPPHIRE 中黄  
Druckmeister SAPPHIRE 黄色  
Druckmeister SAPPHIRE 红色  
Druckmeister SAPPHIRE 蓝色  
Druckmeister SAPPHIRE 黑色  
Druckmeister CRYSTAL 中黄  
Druckmeister CRYSTAL 黄色  
Druckmeister CRYSTAL 红色  
Druckmeister CRYSTAL 蓝色  
Druckmeister CRYSTAL 黑色  
文轩墨1-1 黑  
文轩墨1-1 蓝  
文轩墨1-1 红  
文轩墨1-1 黄  
文轩墨1-2 黑  
文轩墨1-2 蓝  
文轩墨1-2 红  
文轩墨1-2 黄  
文轩墨1-3 黑  
文轩墨1-3 蓝  
文轩墨1-3 红  
文轩墨1-3 黄  
文轩墨1-4 黑



Unless otherwise agreed in writing, this document is issued by the Company subject to its General Conditions of Service printed overleaf, available on request or accessible at <http://www.sgs.com/en/Terms-and-Conditions.aspx> and, for electronic format documents, subject to Terms and Conditions for Electronic Documents at <http://www.sgs.com/en/Terms-and-Conditions/Terms-e-Documents.aspx>. Attention is drawn to the limitation of liability, indemnification and jurisdiction issues defined therein. Any holder of this document is advised that information contained hereon reflects the Company's findings at the time of its intervention only and within the limits of Client's instructions, if any. The Company's sole responsibility is to its Client and this document does not exonerate parties to a transaction from exercising all their rights and obligations under the transaction documents. This document cannot be reproduced except in full, without prior written approval of the Company. Any unauthorized alteration, forgery or falsification of the content or appearance of this document is unlawful and offenders may be prosecuted to the fullest extent of the law. Unless otherwise stated the results shown in this test report refer only to the sample(s) tested.

Attention: To check the authenticity of testing/inspection report & certificate, please contact us at telephone: (86-755) 8307 1443, or email: [CN.Doccheck@sgs.com](mailto:CN.Doccheck@sgs.com)

## Test Report

No. CANEC2100856701

Date: 20 Jan 2021

Page 18 of 32

文轩墨1-4 蓝  
 文轩墨1-4 红  
 文轩墨1-4 黄  
 新金冠 JN BLACK 黑  
 新金冠 JN CYAN 蓝  
 新金冠 JN MAGENTA 红  
 新金冠 JN YELLOW 黄  
 新冠军MPS-RR 黄  
 新冠军MPS-RR 红  
 新冠军MPS-RR 蓝  
 新冠军MPS-RR 黑  
 MPS-RR 黑-H  
 MPS-RR 蓝-H  
 MPS-RR 红-H  
 CUT-HY 中黄  
 CUT-HY 黄  
 CUT-HY 红  
 CUT-HY 蓝  
 CUT-HY 黑  
 宝印 QD 黄  
 宝印 QD 红  
 宝印 QD 蓝  
 宝印 QD 黑  
 金鼎 黄  
 金鼎 红  
 金鼎 蓝  
 金鼎 黑  
 宝鼎 黄  
 宝鼎 红  
 宝鼎 蓝  
 宝鼎 黑  
 宝辉 黄  
 宝辉 红  
 宝辉 蓝  
 宝辉 黑  
 宝辉 NO.2 黄  
 宝丰 黄  
 宝丰 红  
 宝丰 蓝  
 宝丰 黑  
 宝宇 黑  
 宝宇 蓝  
 宝宇 红



SGS-CSI Standards Technical Services Co., Ltd.  
Guangzhou Branch, Inspection & Testing Services

Unless otherwise agreed in writing, this document is issued by the Company subject to its General Conditions of Service printed overleaf, available on request or accessible at <http://www.sgs.com/en/Terms-and-Conditions.aspx> and, for electronic format documents, subject to Terms and Conditions for Electronic Documents at <http://www.sgs.com/en/Terms-and-Conditions/Terms-e-Document.aspx>. Attention is drawn to the limitation of liability, indemnification and jurisdiction issues defined therein. Any holder of this document is advised that information contained hereon reflects the Company's findings at the time of its intervention only and within the limits of Client's instructions, if any. The Company's sole responsibility is to its Client and this document does not exonerate parties to a transaction from exercising all their rights and obligations under the transaction documents. This document cannot be reproduced except in full, without prior written approval of the Company. Any unauthorized alteration, forgery or falsification of the content or appearance of this document is unlawful and offenders may be prosecuted to the fullest extent of the law. Unless otherwise stated the results shown in this test report refer only to the sample(s) tested.

Attention: To check the authenticity of testing/inspection report & certificate, please contact us at telephone: (86-755) 8307 1443, or email: [CN.Doccheck@sgs.com](mailto:CN.Doccheck@sgs.com)

198 Kezhu Road, Sciencetech Park Guangzhou Economic & Technology Development District, Guangzhou, China 510663  
中国·广州·经济技术开发区科学城科珠路198号 邮编: 510663

t (86-20) 82155555 www.sgsgroup.com.cn  
t (86-20) 82155555 sgs.china@sgs.com

## Test Report

No. CANEC2100856701

Date: 20 Jan 2021

Page 19 of 32

宝宇 黄  
彩冠 黑  
彩冠 蓝  
彩冠 红  
彩冠 黄  
爱丽丝 GP-1 中黄  
爱丽丝 GP-1 黄  
爱丽丝 GP-1 红  
爱丽丝 GP-1 蓝  
爱丽丝 GP-1 黑  
爱丽丝 RUB 黑  
爱丽丝 RUB 蓝  
爱丽丝 RUB 红  
爱丽丝 RUB 黄  
丽彩高光不结皮 黑  
丽彩高光不结皮 蓝  
丽彩高光不结皮 红  
丽彩高光不结皮 黄  
丽彩高光不结皮 NO.2 黄  
新丽 黑(不结皮)  
新丽 蓝(不结皮)  
新丽 红(不结皮)  
新丽 黄(不结皮)  
宝鲸 黑  
宝鲸 蓝  
宝鲸 红  
宝鲸 黄  
XHY 黄  
XHY 红  
XHY 蓝  
XHY 黑  
豪颜 黄  
豪颜 红  
豪颜 蓝  
豪颜 黑  
宝鹏 NV HF黄  
福思 耐磨增强 黄(KD)  
福思 耐磨增强 红(KD)  
福思 耐磨增强 蓝(KD)  
福思 耐磨增强 黑(KD)  
新金冠 爱丽丝 RR 黄(KD)  
新金冠 爱丽丝 RR 红(KD)  
新金冠 爱丽丝 RR 蓝(KD)



Unless otherwise agreed in writing, this document is issued by the Company subject to its General Conditions of Service printed overleaf, available on request or accessible at <http://www.sgs.com/en/Terms-and-Conditions.aspx> and, for electronic format documents, subject to Terms and Conditions for Electronic Documents at <http://www.sgs.com/en/Terms-and-Conditions/Terms-e-Document.aspx>. Attention is drawn to the limitation of liability, indemnification and jurisdiction issues defined therein. Any holder of this document is advised that information contained hereon reflects the Company's findings at the time of its intervention only and within the limits of Client's instructions, if any. The Company's sole responsibility is to its Client and this document does not exonerate parties to a transaction from exercising all their rights and obligations under the transaction documents. This document cannot be reproduced except in full, without prior written approval of the Company. Any unauthorized alteration, forgery or falsification of the content or appearance of this document is unlawful and offenders may be prosecuted to the fullest extent of the law. Unless otherwise stated the results shown in this test report refer only to the sample(s) tested.

Attention: To check the authenticity of testing/inspection report & certificate, please contact us at telephone: (86-755) 8307 1443, or email: [CN.Doccheck@sgs.com](mailto:CN.Doccheck@sgs.com)

## Test Report

No. CANEC2100856701

Date: 20 Jan 2021

Page 20 of 32

新金冠 爱丽丝 RR 黑(KD)  
宝凤 QD NO.3 黄  
福思 黄(JP)  
福思 红(JP)  
福思 蓝(JP)  
福思 黑(JP)  
晶通不结皮油墨 黑色  
晶通不结皮油墨 蓝色  
晶通不结皮油墨 红色  
晶通不结皮油墨 黄色  
WEB COLD B 黑 ( 冷固 )  
WEB COLD C 蓝 ( 冷固 )  
WEB COLD M 红 ( 冷固 )  
WEB COLD M 红 ( 冷固 ) S  
WEB COLD Y 黄 ( 冷固 )  
宝鼎 NO.3 黑  
宝鼎 NO.3 蓝  
宝鼎 NO.3 黄  
宝鼎 NO.3 红  
宝印-99 黑  
宝印-99 蓝  
宝印-99 红  
宝印-99 黄  
金福 黑  
金福 蓝  
金福 黄  
金福 红  
福印 中黄  
福印 黄  
福印 红  
福印 蓝  
福印 黑  
ZRP 超耐晒黄  
ZRP 超耐晒红相黄  
ZRP 超耐晒橙  
ZRP 超耐晒金红  
ZRP 超耐晒桃红  
ZRP 超耐晒红  
ZRP 超耐晒绿  
ZRP 超耐晒紫  
ZRP 超耐晒黑  
蓝鹏 NO.2 红  
宝鲸 NO.2 透明黄



Unless otherwise agreed in writing, this document is issued by the Company subject to its General Conditions of Service printed overleaf, available on request or accessible at <http://www.sgs.com/en/Terms-and-Conditions.aspx> and, for electronic format documents, subject to Terms and Conditions for Electronic Documents at <http://www.sgs.com/en/Terms-and-Conditions/Terms-e-Document.aspx>. Attention is drawn to the limitation of liability, indemnification and jurisdiction issues defined therein. Any holder of this document is advised that information contained hereon reflects the Company's findings at the time of its intervention only and within the limits of Client's instructions, if any. The Company's sole responsibility is to its Client and this document does not exonerate parties to a transaction from exercising all their rights and obligations under the transaction documents. This document cannot be reproduced except in full, without prior written approval of the Company. Any unauthorized alteration, forgery or falsification of the content or appearance of this document is unlawful and offenders may be prosecuted to the fullest extent of the law. Unless otherwise stated the results shown in this test report refer only to the sample(s) tested.

Attention: To check the authenticity of testing/inspection report & certificate, please contact us at telephone: (86-755) 8307 1443, or email: [CN.Doccheck@sgs.com](mailto:CN.Doccheck@sgs.com)

SGS-CSTC Standards Technical Services Co., Ltd.  
Guangzhou Branch / 广州分公司 / 检测技术服务

198 Kezhu Road, Sciencetech Park Guangzhou Economic & Technology Development District, Guangzhou, China 510663  
中国·广州·经济技术开发区科学城科珠路198号 邮编: 510663

t (86-20) 82155555 www.sgsgroup.com.cn  
t (86-20) 82155555 sgs.china@sgs.com



## Test Report

No. CANEC2100856701

Date: 20 Jan 2021

Page 21 of 32

MPS-RR NO.2 透明黄

New Tiger 新宝虎 黑 BS-H

晶通-G 黄

晶通-G 红

晶通-G 蓝

晶通-G 黑

宝钧 (不结皮) 黄

宝钧 (不结皮) 红

宝钧 (不结皮) 蓝

宝钧 (不结皮) 黑

BG 超耐晒紫

BG 超耐晒金红

BG 超耐晒红

BG 超耐晒桃红

BG 超耐晒绿

BG 超耐晒黄

BG 超耐晒黑

TNK-PLUS 黑

TNK-PLUS 蓝

TNK-PLUS 红

TNK-PLUS 黄

TNK-PLUS 中黄

新冠军 SAT ON 黑

新冠军 SAT ON 蓝

新冠军 SAT ON 红

新冠军 SAT ON 黄

中华商务专用油墨 黑(RR)

新尚 黄

新尚 红

新尚 蓝

新尚 黑

印象ELEPRINT-R 黄

印象ELEPRINT-R 红

印象ELEPRINT-R 蓝

印象ELEPRINT-R 黑

印象ELEPRINT-R 黄 S

印象ELEPRINT-R 红 S

印象ELEPRINT-R 蓝 S

印象ELEPRINT-R 黑 S

NCP PT PROCESS BLUE C天兰(标准

NCP PT REFLEX BLUE C射光兰标准

NCP PT BLUE 072C 深兰(标准)

NCP PT GREEN C 绿(标准)

SGS-STD Standards Technical Services Co., Ltd.  
Guangzhou Branch

Unless otherwise agreed in writing, this document is issued by the Company subject to its General Conditions of Service printed overleaf, available on request or accessible at <http://www.sgs.com/en/Terms-and-Conditions.aspx> and, for electronic format documents, subject to Terms and Conditions for Electronic Documents at <http://www.sgs.com/en/Terms-and-Conditions/Terms-e-Documents.aspx>. Attention is drawn to the limitation of liability, indemnification and jurisdiction issues defined therein. Any holder of this document is advised that information contained hereon reflects the Company's findings at the time of its intervention only and within the limits of Client's instructions, if any. The Company's sole responsibility is to its Client and this document does not exonerate parties to a transaction from exercising all their rights and obligations under the transaction documents. This document cannot be reproduced except in full, without prior written approval of the Company. Any unauthorized alteration, forgery or falsification of the content or appearance of this document is unlawful and offenders may be prosecuted to the fullest extent of the law. Unless otherwise stated the results shown in this test report refer only to the sample(s) tested.

Attention: To check the authenticity of testing/inspection report & certificate, please contact us at telephone: (86-755) 8307 1443, or email: [CN.Doccheck@sgs.com](mailto:CN.Doccheck@sgs.com)

198 Kezhu Road, Science Park Guangzhou Economic &amp; Technology Development District, Guangzhou, China 510663

t (86-20) 82155555 www.sgs.com.cn

中国·广州·经济技术开发区科学城科珠路198号

邮编: 510663

t (86-20) 82155555 sgs.china@sgs.com

## Test Report

No. CANEC2100856701

Date: 20 Jan 2021

Page 22 of 32

NCP PT ORANGE 021C 橙(标准)  
 NCP PT PURPLE C 红紫 ( 标准 )  
 NCP PT RHODAMINE RED C 桃红 标准  
 NCP PT RUBINE RED C 洋红(标准)  
 NCP PT WARM RED C 金红(标准)  
 NCP PT RED 032 C 大红(标准)  
 NCP PT VIOLET C 兰紫(标准)  
 NCP PT YELLOW C 黄(标准 )  
 NCP PT YELLOW 012C 深黄(标准 )  
 NCP P147高浓度黄  
 宝凤 姚记大红 S ( 上海姚记 )  
 宝凤 03 金光红  
 NCP R74 耐晒红(SH)  
 NCP D.Y32 耐晒黄 ( SH )  
 NCP FG MATT VARNISH 消光剂(SH)  
 DICPOP W 白(H)  
 NCP D.WHITE 白色(SH)  
 NCP D.SILVER 银(SH)  
 NEW ADVAN-E 红相黄 S  
 新金冠-E 2号黄  
 宝燕 透明黄 HD SWALLOW YELLOW  
 彩冠 透明黄  
 宝燕 透明黄HD(SHHP)  
 YM100-A 黄 ( 透明黄 )  
 山东世纪 黄  
 D-PAK 黄  
 D-PAK 黄(S)  
 宝狮 黄 ( 内衬 )  
 宝狮 透明黄  
 PACKSAFE 黄 亮光快干环保油墨  
 宝鹭 透明黄  
 宝象 红相黄  
 YM100-A 红相黄  
 宝狮 红相黄  
 宝燕 HD 红相黄 ( 内衬 )  
 宝燕 红相黄 HD  
 新-BOX 红相黄(S)  
 宝燕 红相黄 HD S  
 宝燕 透明黄 HD S  
 宝鹭 中黄  
 NCP FG MEDIUM 调墨油  
 NCP FG MEDIUM 调墨油 (S)  
 NCP 冲淡剂(SH)



Unless otherwise agreed in writing, this document is issued by the Company subject to its General Conditions of Service printed overleaf, available on request or accessible at <http://www.sgs.com/en/Terms-and-Conditions.aspx> and, for electronic format documents, subject to Terms and Conditions for Electronic Documents at <http://www.sgs.com/en/Terms-and-Conditions/Terms-e-Documents.aspx>. Attention is drawn to the limitation of liability, indemnification and jurisdiction issues defined therein. Any holder of this document is advised that information contained hereon reflects the Company's findings at the time of its intervention only and within the limits of Client's instructions, if any. The Company's sole responsibility is to its Client and this document does not exonerate parties to a transaction from exercising all their rights and obligations under the transaction documents. This document cannot be reproduced except in full, without prior written approval of the Company. Any unauthorized alteration, forgery or falsification of the content or appearance of this document is unlawful and offenders may be prosecuted to the fullest extent of the law. Unless otherwise stated the results shown in this test report refer only to the sample(s) tested.

Attention: To check the authenticity of testing/inspection report & certificate, please contact us at telephone: (86-755) 8307 1443, or email: [CN.Doccheck@sgs.com](mailto:CN.Doccheck@sgs.com)

SGS-CSI Standards Technical Services Co., Ltd.  
 Guangzhou Branch, Inspection & Testing Services

198 Kezhu Road, Science Park Guangzhou Economic & Technology Development District, Guangzhou, China 510663  
 中国·广州·经济技术开发区科学城科珠路198号 邮编: 510663

t (86-20) 82155555 www.sgsgroup.com.cn  
 t (86-20) 82155555 sgs.china@sgs.com

## Test Report

No. CANEC2100856701

Date: 20 Jan 2021

Page 23 of 32

合成纸专用 黑  
合成纸专用 蓝  
合成纸专用 红  
合成纸专用 黄  
合成纸专用 白  
YM 金银卡专用 黑  
YM 金银卡专用 蓝  
YM 金银卡专用 红  
YM 金银卡专用 黄  
YM 金银卡专用 白墨  
DICPOP-E BY 黑  
DICPOP-E BY 蓝  
DICPOP-E BY 红  
DICPOP-E BY 黄  
DICPOP-E BY 白  
宝丽 特黑  
宝凤 光油  
GD OP VARNISH 上光油  
GW OP VARNISH 上光油 (A)  
GW OP VARNISH (耐磨)  
GW OP VARNISH 上光油 (A)(再快干)  
GW OP VARNISH 上光油 (高光泽)  
GW OP VARNISH (紫丹防粘光油)  
DICPOP B 黑(H)  
DICPOP C 蓝(H)  
DICPOP M 红(H)  
DICPOP Y 透明黄(H)  
DICPOP W 白(H)  
YM 金银卡专用 大红  
YM 金银卡专用 金红  
DICPOP 光油  
DICPOP #0 (调墨油)  
DICPOP 金光红  
DICPOP 大红  
DICPOP 中华红  
DICPOP 百威专红(浙江豪能)  
DICPOP 干燥剂  
DICPOP 稀释剂  
DICPOP 耐磨剂  
CK01.5\_DICPOP 赤金  
CK01.5\_DICPOP 青金-MT  
PACKSAFE 2号黄  
PACKSAFE 红相黄 亮光快干环保油墨



Unless otherwise agreed in writing, this document is issued by the Company subject to its General Conditions of Service printed overleaf, available on request or accessible at <http://www.sgs.com/en/Terms-and-Conditions.aspx> and, for electronic format documents, subject to Terms and Conditions for Electronic Documents at <http://www.sgs.com/en/Terms-and-Conditions/Terms-e-Document.aspx>. Attention is drawn to the limitation of liability, indemnification and jurisdiction issues defined therein. Any holder of this document is advised that information contained hereon reflects the Company's findings at the time of its intervention only and within the limits of Client's instructions, if any. The Company's sole responsibility is to its Client and this document does not exonerate parties to a transaction from exercising all their rights and obligations under the transaction documents. This document cannot be reproduced except in full, without prior written approval of the Company. Any unauthorized alteration, forgery or falsification of the content or appearance of this document is unlawful and offenders may be prosecuted to the fullest extent of the law. Unless otherwise stated the results shown in this test report refer only to the sample(s) tested.

Attention: To check the authenticity of testing/inspection report & certificate, please contact us at telephone: (86-755) 8307 1443, or email: [CN.Doccheck@sgs.com](mailto:CN.Doccheck@sgs.com)

## Test Report

No. CANEC2100856701

Date: 20 Jan 2021

Page 24 of 32

NEW ADVAN-E 红相黄 (西口)  
宝丽 黑 (H型)  
宝燕 中黄 SWALLOW YELLOW  
宝燕 中黄 SWALLOW YELLOW  
YM100-A 黄 (中黄)  
DK0190\_通彩 红相黄 (内衬)  
NCP PT BLUE 072C 深兰(标准) S  
NCP PT GREEN C 绿(标准) S  
PACKSAFE 红相黄 亮快干环保油墨 S  
PACKSAFE 黄 亮快干环保油墨 S  
NEW CAPS-G CY BLACK S  
NEW CAPS-G BLACK CY  
NCP TIGER RICH GOLD 青金  
DICPOP 青金  
POLARIS BLACK 宝丽黑  
NCP 撤淡剂  
SL 剂  
REDUCER 稀释剂  
JP 去粘剂  
CM 干燥剂  
耐刮擦助剂  
\*O 调墨油  
HI-GLOSS MEDIUM 高光调墨  
顺昌无蜡调墨油  
N21 Extender 亮光浆  
大鹏金红  
东柏金红  
HF YELLOW 黄  
HF NO.2 YELLOW 黄  
HF NO.2 YELLOW 黄-H  
尚彩 中黄  
尚彩 黄  
尚彩 红  
尚彩 蓝  
尚彩 黑  
宝鹤 黑  
宝鹤 蓝  
新境界 黄  
新境界 红  
新境界 蓝  
新境界 黑  
耐晒金红 NO.2  
XHY 黄 S



Unless otherwise agreed in writing, this document is issued by the Company subject to its General Conditions of Service printed overleaf, available on request or accessible at <http://www.sgs.com/en/Terms-and-Conditions.aspx> and, for electronic format documents, subject to Terms and Conditions for Electronic Documents at <http://www.sgs.com/en/Terms-and-Conditions/Terms-e-Document.aspx>. Attention is drawn to the limitation of liability, indemnification and jurisdiction issues defined therein. Any holder of this document is advised that information contained hereon reflects the Company's findings at the time of its intervention only and within the limits of Client's instructions, if any. The Company's sole responsibility is to its Client and this document does not exonerate parties to a transaction from exercising all their rights and obligations under the transaction documents. This document cannot be reproduced except in full, without prior written approval of the Company. Any unauthorized alteration, forgery or falsification of the content or appearance of this document is unlawful and offenders may be prosecuted to the fullest extent of the law. Unless otherwise stated the results shown in this test report refer only to the sample(s) tested.

Attention: To check the authenticity of testing/inspection report & certificate, please contact us at telephone: (86-755) 8307 1443, or email: [CN.Doccheck@sgs.com](mailto:CN.Doccheck@sgs.com)

SGS-CSI Standards Technical Services Co., Ltd.  
Guangzhou Branch

198 Kezhu Road, Sciencetech Park Guangzhou Economic & Technology Development District, Guangzhou, China 510663  
中国·广州·经济技术开发区科学城科珠路198号 邮编: 510663

t (86-20) 82155555 www.sgsgroup.com.cn  
t (86-20) 82155555 sgs.china@sgs.com



## Test Report

No. CANEC2100856701

Date: 20 Jan 2021

Page 25 of 32

XHY 红 S  
XHY 蓝 S  
XHY 黑 S  
新冠军 SAT ON 黑 S  
新冠军 SAT ON 蓝 S  
新冠军 SAT ON 红 S  
新冠军 SAT ON NO.2红 S  
新冠军 SAT ON NO.2红  
新冠军 SAT ON 黄 S  
宝印 QD 黄 S  
宝印 QD 红 S  
宝印 QD NO.2红  
宝印 QD NO.2红 S  
宝印 QD 蓝 S  
宝印 QD黑 S  
新宝马 黄  
新宝马 红  
新宝马 蓝  
新宝马 黑  
尚彩 中黄-H  
尚彩 黄-H  
尚彩 红-H  
尚彩 蓝-H  
尚彩 黑-H  
新宝龙-TK 黄  
新宝龙-TK 红  
新宝龙-TK 蓝  
新宝龙-TK 黑  
福印 中黄 S  
福印 黄 S  
福印 红 S  
福印 蓝 S  
福印 黑 S  
印象ELEPRINT-R NO.2 红 S  
印象ELEPRINT-R NO.2 红  
NEW CAPS-G NPZ 特黑  
NEW CAPS-G NPZ 特黑 S  
雅韵 黄 茉莉香(KD)  
雅韵 红 茉莉香(KD)  
雅韵 蓝 茉莉香(KD)  
雅韵 黑 茉莉香(KD)  
雅韵 黄 焦香松木香(KD)  
雅韵 红 焦香松木香(KD)



Unless otherwise agreed in writing, this document is issued by the Company subject to its General Conditions of Service printed overleaf, available on request or accessible at <http://www.sgs.com/en/Terms-and-Conditions.aspx> and, for electronic format documents, subject to Terms and Conditions for Electronic Documents at <http://www.sgs.com/en/Terms-and-Conditions/Terms-e-Documents.aspx>. Attention is drawn to the limitation of liability, indemnification and jurisdiction issues defined therein. Any holder of this document is advised that information contained hereon reflects the Company's findings at the time of its intervention only and within the limits of Client's instructions, if any. The Company's sole responsibility is to its Client and this document does not exonerate parties to a transaction from exercising all their rights and obligations under the transaction documents. This document cannot be reproduced except in full, without prior written approval of the Company. Any unauthorized alteration, forgery or falsification of the content or appearance of this document is unlawful and offenders may be prosecuted to the fullest extent of the law. Unless otherwise stated the results shown in this test report refer only to the sample(s) tested.

Attention: To check the authenticity of testing/inspection report & certificate, please contact us at telephone: (86-755) 8307 1443, or email: [CN.Doccheck@sgs.com](mailto:CN.Doccheck@sgs.com)

SGS-CSI Standards Technical Services Co., Ltd.  
Guangzhou Branch Inspection & Testing Services

198 Kezhu Road, Sciencetech Park Guangzhou Economic & Technology Development District, Guangzhou, China 510663  
中国·广州·经济技术开发区科学城科珠路198号 邮编: 510663

t (86-20) 82155555 www.sgs.com.cn  
t (86-20) 82155555 sgs.china@sgs.com

## Test Report

No. CANEC2100856701

Date: 20 Jan 2021

Page 26 of 32

雅韵 蓝 焦香松木香(KD)  
雅韵 黑 焦香松木香(KD)  
雅韵 黄 香草香(KD)  
雅韵 红 香草香(KD)  
雅韵 蓝 香草香(KD)  
雅韵 黑 香草香(KD)  
雅韵 黄 玫瑰香(KD)  
雅韵 红 玫瑰香(KD)  
雅韵 蓝 玫瑰香(KD)  
雅韵 黑 玫瑰香(KD)  
雅韵 黄 柠檬香(KD)  
雅韵 红 柠檬香(KD)  
雅韵 蓝 柠檬香(KD)  
雅韵 黑 柠檬香(KD)  
新金冠 PH 四色黄  
新金冠 PH 四色红  
新金冠 PH 四色蓝  
新金冠 PH 四色黑  
福印 NO.2 红 S  
宝印 QD 特黑  
宝印 QD 特黑 S  
印象ELEPRINT-R 特黑  
胶印亮光快干油墨 (长荣专用) 黄  
胶印亮光快干油墨 (长荣专用) 红  
胶印亮光快干油墨 (长荣专用) 蓝  
胶印亮光快干油墨 (长荣专用) 黑  
New Pegasus 新飞马 No.2 黄 (ND)  
New Pegasus 新飞马 No.2 红 (ND)  
New Pegasus 新飞马 No.2 蓝 (ND)  
New Pegasus 新飞马 No.2 黑 (ND)  
QuickPrint520 合印亮光快干环保油墨 黄  
QuickPrint520 合印亮光快干环保油墨 红  
QuickPrint520 合印亮光快干环保油墨 蓝  
QuickPrint520 合印亮光快干环保油墨 黑  
BookSafe 书香低气味环保油墨 黄  
BookSafe 书香低气味环保油墨 红  
BookSafe 书香低气味环保油墨 蓝  
BookSafe 书香低气味环保油墨 黑  
NEW CAPS-G NPZ E HF 黄  
海德堡专供 黄 (快干型)  
海德堡专供 红 (快干型)  
海德堡专供 蓝 (快干型)  
海德堡专供 黑 (快干型)



Unless otherwise agreed in writing, this document is issued by the Company subject to its General Conditions of Service printed overleaf, available on request or accessible at <http://www.sgs.com/en/Terms-and-Conditions.aspx> and, for electronic format documents, subject to Terms and Conditions for Electronic Documents at <http://www.sgs.com/en/Terms-and-Conditions/Terms-e-Documents.aspx>. Attention is drawn to the limitation of liability, indemnification and jurisdiction issues defined therein. Any holder of this document is advised that information contained hereon reflects the Company's findings at the time of its intervention only and within the limits of Client's instructions, if any. The Company's sole responsibility is to its Client and this document does not exonerate parties to a transaction from exercising all their rights and obligations under the transaction documents. This document cannot be reproduced except in full, without prior written approval of the Company. Any unauthorized alteration, forgery or falsification of the content or appearance of this document is unlawful and offenders may be prosecuted to the fullest extent of the law. Unless otherwise stated the results shown in this test report refer only to the sample(s) tested.

Attention: To check the authenticity of testing/inspection report & certificate, please contact us at telephone: (86-755) 8307 1443, or email: [CN.Doccheck@sgs.com](mailto:CN.Doccheck@sgs.com)

## Test Report

No. CANEC2100856701

Date: 20 Jan 2021

Page 27 of 32

海德堡专供 黄 (快干型\_2)  
海德堡专供 红 (快干型\_2)  
海德堡专供 蓝 (快干型\_2)  
海德堡专供 黑 (快干型\_2)  
DIC WY四色黑油墨  
DIC WY四色黄油墨  
DIC WY四色红油墨  
DIC WY四色蓝油墨  
New Tiger 新宝虎 BS 黑-H-1  
NEW CAPS-G NPZ E 特黑  
NEW CAPS-G NPZ E 特黑 S  
雅韵 黄 茉莉香(KD)  
雅韵 红 茉莉香(KD)  
雅韵 蓝 茉莉香(KD)  
雅韵 黑 茉莉香(KD)  
雅韵 黄 焦香松木香(KD)  
雅韵 红 焦香松木香(KD)  
雅韵 蓝 焦香松木香(KD)  
雅韵 黑 焦香松木香(KD)  
雅韵 黄 香草香(KD)  
雅韵 红 香草香(KD)  
雅韵 蓝 香草香(KD)  
雅韵 黑 香草香(KD)  
雅韵 黄 玫瑰香(KD)  
雅韵 红 玫瑰香(KD)  
雅韵 蓝 玫瑰香(KD)  
雅韵 黑 玫瑰香(KD)  
雅韵 黄 柠檬香(KD)  
雅韵 红 柠檬香(KD)  
雅韵 蓝 柠檬香(KD)  
雅韵 黑 柠檬香(KD)  
宝鲸 NO.2 红  
新BOX 中黄  
New Pegasus 新飞马 红相黄-H  
图腾 合印 200型 黄  
图腾 合印 200型 红  
图腾 合印 200型 蓝  
图腾 合印 200型 黑  
福印 NO.2 红  
PHOENIX 05 宝凤 05-04 大红  
PHOENIX 宝凤 BO-230 透明黄  
DIC WY 四色黄 (哑粉纸专用)  
DIC WY 四色黄 低卤 (哑粉纸专用)



Unless otherwise agreed in writing, this document is issued by the Company subject to its General Conditions of Service printed overleaf, available on request or accessible at <http://www.sgs.com/en/Terms-and-Conditions.aspx> and, for electronic format documents, subject to Terms and Conditions for Electronic Documents at <http://www.sgs.com/en/Terms-and-Conditions/Terms-e-Document.aspx>. Attention is drawn to the limitation of liability, indemnification and jurisdiction issues defined therein. Any holder of this document is advised that information contained hereon reflects the Company's findings at the time of its intervention only and within the limits of Client's instructions, if any. The Company's sole responsibility is to its Client and this document does not exonerate parties to a transaction from exercising all their rights and obligations under the transaction documents. This document cannot be reproduced except in full, without prior written approval of the Company. Any unauthorized alteration, forgery or falsification of the content or appearance of this document is unlawful and offenders may be prosecuted to the fullest extent of the law. Unless otherwise stated the results shown in this test report refer only to the sample(s) tested.

Attention: To check the authenticity of testing/inspection report & certificate, please contact us at telephone: (86-755) 8307 1443, or email: [CN.Doccheck@sgs.com](mailto:CN.Doccheck@sgs.com)

## Test Report

No. CANEC2100856701

Date: 20 Jan 2021

Page 28 of 32

DIC WY 四色红 ( 哑粉纸专用 )  
DIC WY 四色蓝 ( 哑粉纸专用 )  
DIC WY 四色黑 ( 哑粉纸专用 )  
PHOENIX 宝凤 BO-133 金红  
PHOENIX 宝凤 BO-134 大红  
PHOENIX 宝凤 MX-182 金红  
PHOENIX 宝凤 MX-188 桔红  
PHOENIX 宝凤 MX-381 孔蓝  
PHOENIX 宝凤 MX-681 绿  
PHOENIX 宝凤 MX-388 品兰  
PHOENIX 宝凤 BO-131 桃红  
福龙 特黑 S  
PACKSAFE 亮彩 低气味环保油墨 黄  
PACKSAFE 亮彩 低气味环保油墨 红  
PACKSAFE 亮彩 低气味环保油墨 蓝  
PACKSAFE 亮彩 低气味环保油墨 黑  
HF 金红  
赛飞扬 410 黄  
赛飞扬 410 红  
赛飞扬 410 蓝  
赛飞扬 410 黑  
新金冠 No.1RR HF 黄 ( 低卤 )  
格瑞尔 ( GREONE ) 800 不结皮环保油墨 NO.2黄  
中天印刷物资专供 黄色  
中天印刷物资专供 红色  
金鹏 粉灰卡 黑  
金鹏 粉灰卡 红  
金鹏 粉灰卡 黄  
金鹏 粉灰卡 蓝  
金鹏 铜版纸 黑  
金鹏 铜版纸 红  
金鹏 铜版纸 黄  
金鹏 铜版纸 蓝  
SOY 联机耐磨光油  
WEB COLD ( 冷固 ) H 系列  
WEB COLD ( 冷固 ) 中间色系列  
臻澜 ET-360 低气味黄  
臻澜 ET-360 低气味红  
臻澜 ET-360 低气味蓝  
臻澜 ET-360 低气味黑  
绿印 黄  
绿印 红  
绿印 蓝



Unless otherwise agreed in writing, this document is issued by the Company subject to its General Conditions of Service printed overleaf, available on request or accessible at <http://www.sgs.com/en/Terms-and-Conditions.aspx> and, for electronic format documents, subject to Terms and Conditions for Electronic Documents at <http://www.sgs.com/en/Terms-and-Conditions/Terms-e-Document.aspx>. Attention is drawn to the limitation of liability, indemnification and jurisdiction issues defined therein. Any holder of this document is advised that information contained hereon reflects the Company's findings at the time of its intervention only and within the limits of Client's instructions, if any. The Company's sole responsibility is to its Client and this document does not exonerate parties to a transaction from exercising all their rights and obligations under the transaction documents. This document cannot be reproduced except in full, without prior written approval of the Company. Any unauthorized alteration, forgery or falsification of the content or appearance of this document is unlawful and offenders may be prosecuted to the fullest extent of the law. Unless otherwise stated the results shown in this test report refer only to the sample(s) tested.

Attention: To check the authenticity of testing/inspection report & certificate, please contact us at telephone: (86-755) 8307 1443, or email: [CN.Doccheck@sgs.com](mailto:CN.Doccheck@sgs.com)

SGS-CSTC Standards Technical Services Co., Ltd.  
Guangzhou Branch / 广州分公司 / 检验检测专用章

198 Kezhu Road, Sciencetech Park Guangzhou Economic & Technology Development District, Guangzhou, China 510663  
中国·广州·经济技术开发区科学城科珠路198号 邮编: 510663

t (86-20) 82155555 www.sgs.com.cn  
t (86-20) 82155555 sgs.china@sgs.com



## Test Report

No. CANEC2100856701

Date: 20 Jan 2021

Page 29 of 32

绿印 黑  
绿尚 E 低气味环保油墨 黑  
绿尚 E 低气味环保油墨 红  
绿尚 E 低气味环保油墨 黄  
绿尚 E 低气味环保油墨 蓝  
绿尚 E 低气味环保油墨 黑 S  
绿尚 E 低气味环保油墨 红 S  
绿尚 E 低气味环保油墨 黄 S  
绿尚 E 低气味环保油墨 蓝 S  
绿尚 低气味环保油墨 黑  
绿尚 低气味环保油墨 红  
绿尚 低气味环保油墨 黄  
绿尚 低气味环保油墨 蓝  
绿尚 低气味环保油墨 特黑  
绿尚 低气味环保油墨 红相黄  
BookSafe 书香金冠 低气味大豆环保油墨 黄  
BookSafe 书香金冠 低气味大豆环保油墨 黑  
BookSafe 书香金冠 低气味大豆环保油墨 红  
BookSafe 书香金冠 低气味大豆环保油墨 蓝  
超耐晒黄 NO.2  
超耐晒红 NO.2  
Mixture



Unless otherwise agreed in writing, this document is issued by the Company subject to its General Conditions of Service printed overleaf, available on request or accessible at <http://www.sgs.com/en/Terms-and-Conditions.aspx> and, for electronic format documents, subject to Terms and Conditions for Electronic Documents at <http://www.sgs.com/en/Terms-and-Conditions/Terms-e-Documents.aspx>. Attention is drawn to the limitation of liability, indemnification and jurisdiction issues defined therein. Any holder of this document is advised that information contained hereon reflects the Company's findings at the time of its intervention only and within the limits of Client's instructions, if any. The Company's sole responsibility is to its Client and this document does not exonerate parties to a transaction from exercising all their rights and obligations under the transaction documents. This document cannot be reproduced except in full, without prior written approval of the Company. Any unauthorized alteration, forgery or falsification of the content or appearance of this document is unlawful and offenders may be prosecuted to the fullest extent of the law. Unless otherwise stated the results shown in this test report refer only to the sample(s) tested.

Attention: To check the authenticity of testing/inspection report & certificate, please contact us at telephone: (86-755) 8307 1443, or email: [CN.Doccheck@sgs.com](mailto:CN.Doccheck@sgs.com)

## Test Report

No. CANEC2100856701

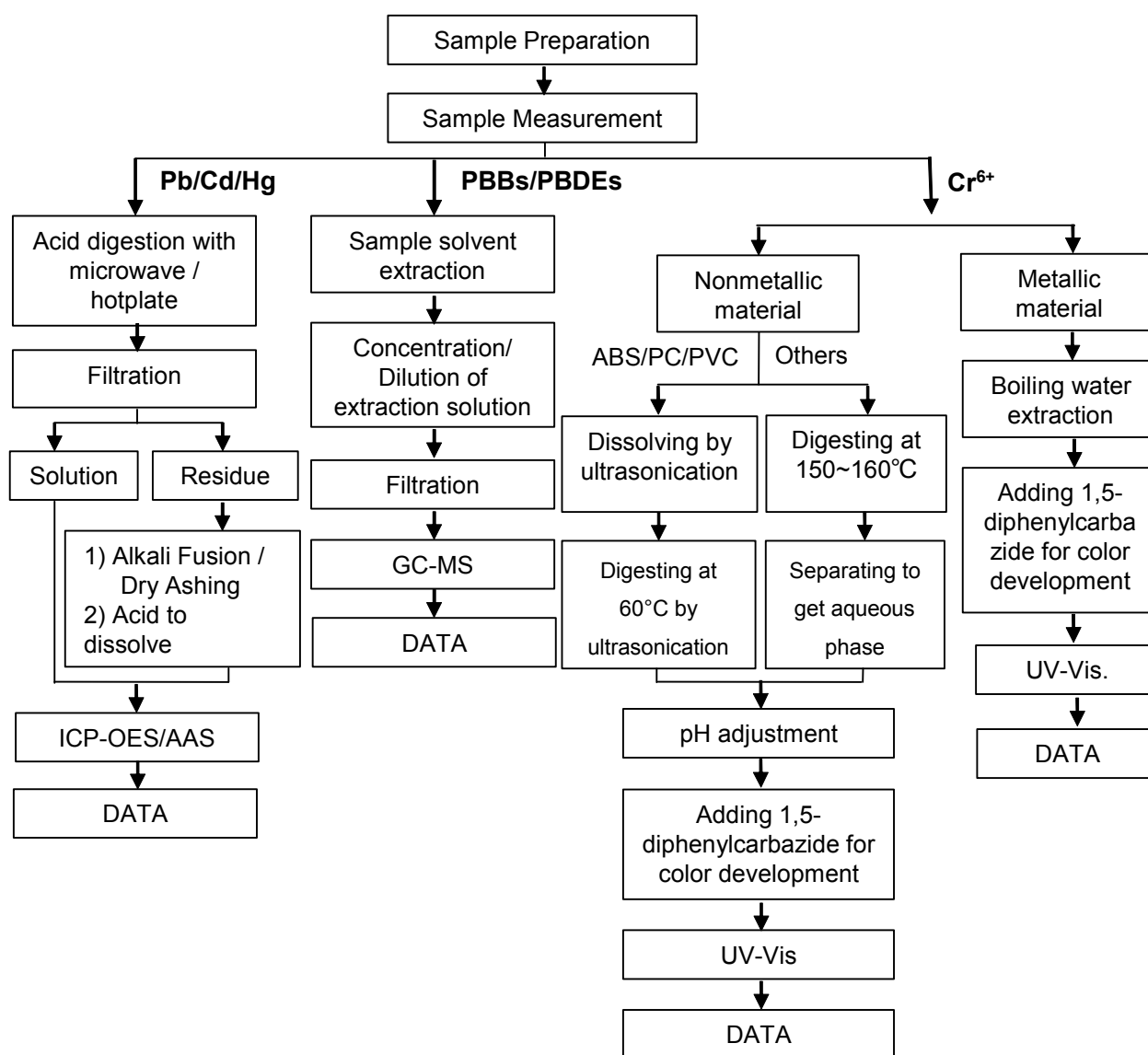
Date: 20 Jan 2021

Page 30 of 32

## ATTACHMENTS

### Pb/Cd/Hg/Cr<sup>6+</sup>/PBBs/PBDEs Testing Flow Chart

- 1) These samples were dissolved totally by pre-conditioning method according to below flow chart.  
(Cr<sup>6+</sup> and PBBs/PBDEs test method excluded).



Unless otherwise agreed in writing, this document is issued by the Company subject to its General Conditions of Service printed overleaf, available on request or accessible at <http://www.sgs.com/en/Terms-and-Conditions.aspx> and, for electronic format documents, subject to Terms and Conditions for Electronic Documents at <http://www.sgs.com/en/Terms-and-Conditions/Terms-e-Document.aspx>. Attention is drawn to the limitation of liability, indemnification and jurisdiction issues defined therein. Any holder of this document is advised that information contained hereon reflects the Company's findings at the time of its intervention only and within the limits of Client's instructions, if any. The Company's sole responsibility is to its Client and this document does not exonerate parties to a transaction from exercising all their rights and obligations under the transaction documents. This document cannot be reproduced except in full, without prior written approval of the Company. Any unauthorized alteration, forgery or falsification of the content or appearance of this document is unlawful and offenders may be prosecuted to the fullest extent of the law. Unless otherwise stated the results shown in this test report refer only to the sample(s) tested.

Attention: To check the authenticity of testing/inspection report & certificate, please contact us at telephone: (86-755) 8307 1443, or email: [CN.Doccheck@sgs.com](mailto:CN.Doccheck@sgs.com)

SGS-CSI Standards Technical Services Co., Ltd.  
Guangzhou Branch, Inspection & Testing Services

198 Kezhu Road, Science Park Guangzhou Economic & Technology Development District, Guangzhou, China 510663  
中国·广州·经济技术开发区科学城科珠路198号 邮编: 510663

t (86-20) 82155555 www.sgs.com.cn  
t (86-20) 82155555 sgs.china@sgs.com

## Test Report

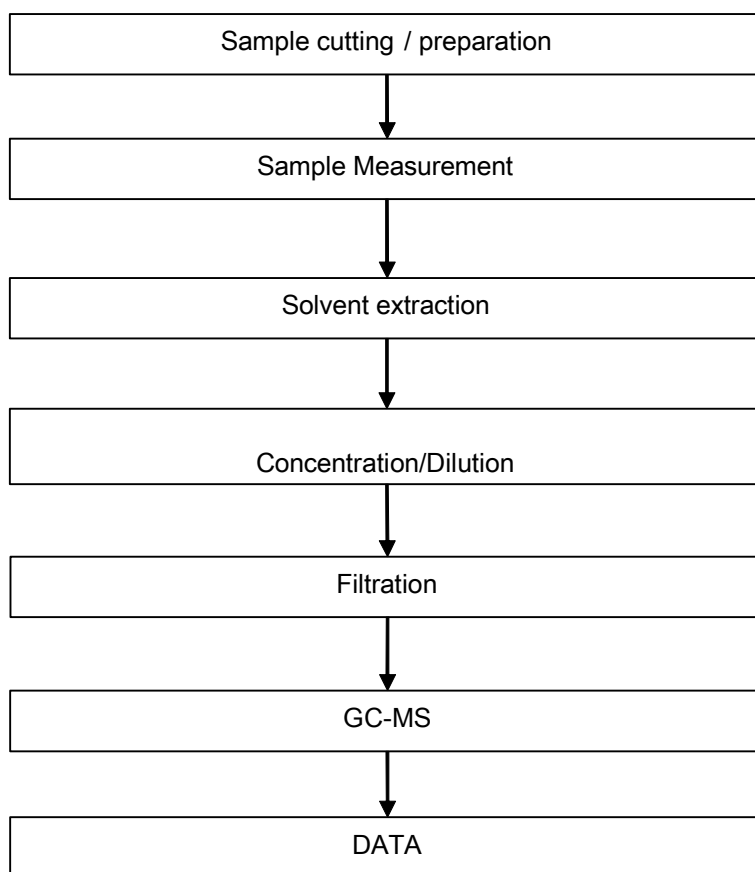
No. CANEC2100856701

Date: 20 Jan 2021

Page 31 of 32

## ATTACHMENTS

### Phthalates Testing Flow Chart



## Test Report

No. CANEC2100856701

Date: 20 Jan 2021

Page 32 of 32

Sample photo:



SGS authenticate the photo on original report only

\*\*\* End of Report \*\*\*



Unless otherwise agreed in writing, this document is issued by the Company subject to its General Conditions of Service printed overleaf, available on request or accessible at <http://www.sgs.com/en/Terms-and-Conditions.aspx> and, for electronic format documents, subject to Terms and Conditions for Electronic Documents at <http://www.sgs.com/en/Terms-and-Conditions/Terms-e-Documents.aspx>. Attention is drawn to the limitation of liability, indemnification and jurisdiction issues defined therein. Any holder of this document is advised that information contained hereon reflects the Company's findings at the time of its intervention only and within the limits of Client's instructions, if any. The Company's sole responsibility is to its Client and this document does not exonerate parties to a transaction from exercising all their rights and obligations under the transaction documents. This document cannot be reproduced except in full, without prior written approval of the Company. Any unauthorized alteration, forgery or falsification of the content or appearance of this document is unlawful and offenders may be prosecuted to the fullest extent of the law. Unless otherwise stated the results shown in this test report refer only to the sample(s) tested.

Attention: To check the authenticity of testing/inspection report & certificate, please contact us at telephone: (86-755) 8307 1443, or email: [CN.Doccheck@sgs.com](mailto:CN.Doccheck@sgs.com)